

# HIGH POWER PANEL DISTRIBUTION SERIES

PANEL DISTRIBUTION POWER BLOCK

600 VOLTS/380 AMPS

## SERIES

HP-ATC - 380 -  -  P

### Type:

Panel Distribution

### Features:

1-3 Poles

Clear Plastic Safety Cover (Optional)

### Applications:

Suitable for:

Panels

HVAC Equipment

Standby Generators

Switch Gear

Lighting Panels

### Electrical

#### Rated Voltage:

600V

#### Rated Current:

380A

#### Screw Size / Torque

<b>Line</b>	AL 13/16 UN	3/8 Hex
	500 MCM~6 AWG	375 LB/IN
	500 MCM~ 4 AWG	375 LB/IN
	5/16-18 Stud	126 LB/IN
<b>Load</b>	500 MCM~6 AWG	375 LB/IN
	2-3 AWG	50 LB/IN
	4-6 AWG	45 LB/IN
	8 AWG	40 LB/IN
	10-14 AWG	35 LB/IN
	5/16-18 Stud	126 LB/IN

#### Operating Temperature:

-25°C to +125°C

#### Materials

##### Housing:

Phenolic 94V-0

##### Cover:

Polycarbonate (UL94V-2)

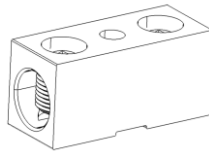
##### Terminals:

Aluminum

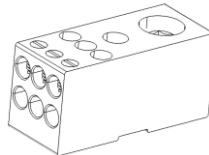
##### Withstanding Voltage:

AC 2,500 V

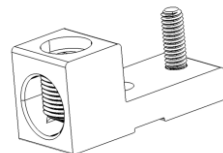
Note: Hex Nuts & Washers Included



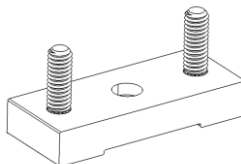
HP-ATC-380-1



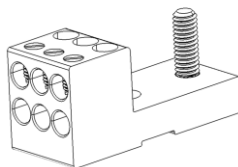
HP-ATC-380-2



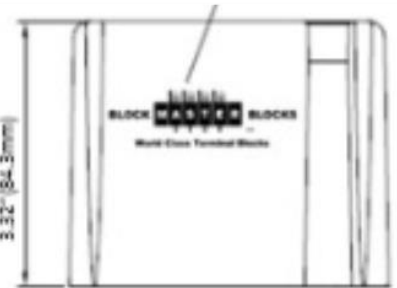
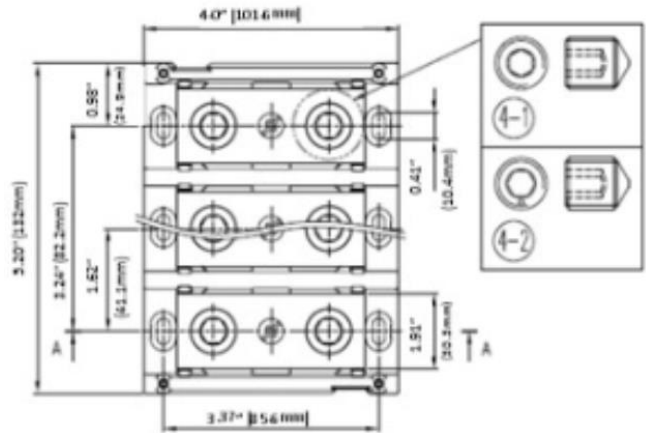
HP-ATC-380-3



HP-ATC-380-4



HP-ATC-380-5



## HOW TO ORDER:

HP-ATC - 380 -  -  P -  CL1  
 ↓ ↓ ↓  
 Style 1-3 Poles Clear Cover (Optional)



1400 Howard Street Phone: (847) 956-1680  
 Elk Grove Village, IL 60007 Fax: (847) 956-1690

[www.BlockMaster.com](http://www.BlockMaster.com)