

Brand New! Unique Product Development!

Modular Thru-Panel Medium-Power Block

Pitch: 8.5mm

300 Volts / 20 Amps

PART#:
OTB-351

Type:
Medium-Power Thru-Panel

Features:
SEMS Screws
Plastic, Finger-Safe Cover Included

Applications:
Suitable for:
Power Supplies
Servo & Variable Frequency
Motor Drives
Lighting
Industrial Controls
Electric Heating

Electrical
Rated Voltage:
300V

Rated Current:
20A

Wire Size:
12-22 AWG

Operating Temperature:
-30C to +80C

Materials
Housing:
Polycarbonate (UL94V-0)
Standard Color: Black
Cover:
Polycarbonate (UL94V-0), Clear

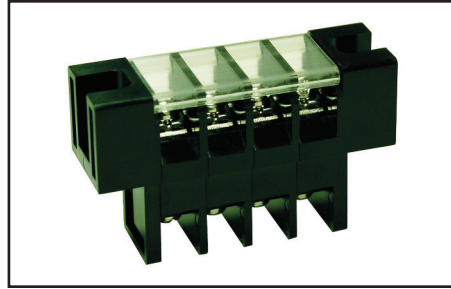
Terminal:
Brass, Nickel-Plated

Positions Available:
2-15

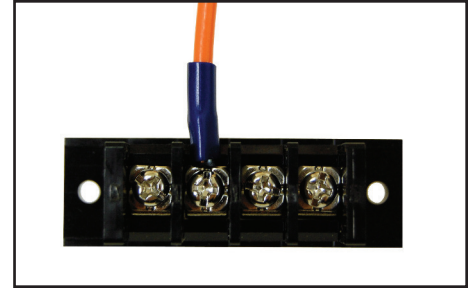
Screw Size:
M3.0 and M3.5, Steel, Nickel-Plated

Withstanding Voltage:
AC2000V

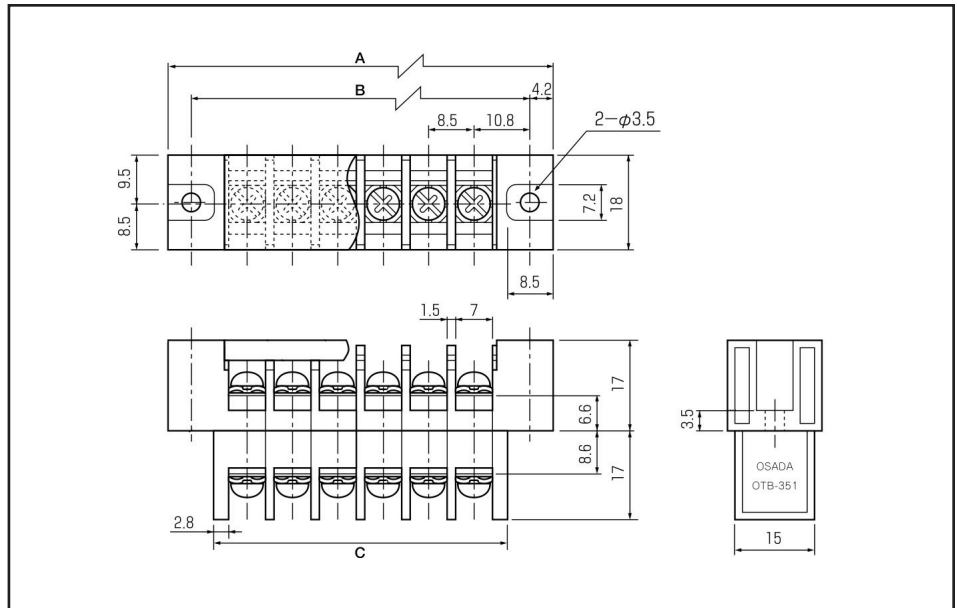
Torque:
8.85 lbs. per inch



OTB-351 with clear cover installed

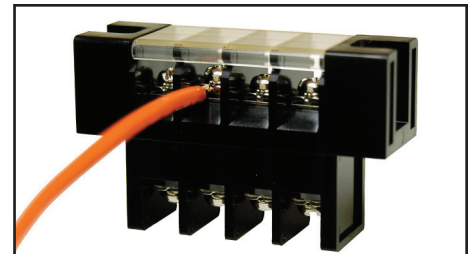


(Typical Application)

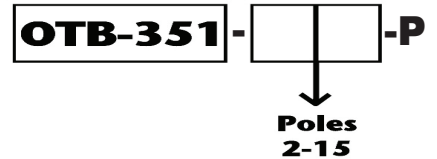


BlockMaster Electronics' new OTB-351 Series are medium-power, thru-panel terminal blocks available in 2-15 positions.

BlockMaster's OTB-351 series are perfect for interfacing internally wired products to the outside world. They offer a clear, protective cover to reduce shock hazard, and each terminal has a SEMS screw for convenient field wiring as shown. Suitable for industrial controls, spa controls or any medium-power field wiring to control box application.



HOW TO ORDER:



4/09/03

1400 Howard Street Phone: (847) 956-1680
Elk Grove Village, IL 60007 Fax: (847) 956-1690

www.BlockMaster.com