

Specifications: CIM-4 Series

Features:

- Unique angled wire entry
- 2 to 25 positions single mold
- Housing is resistant to chlorinated solvents, with no dioxin or detrimental to health halogens
- Every position of this product is mechanically and electrically tested during assembly to ensure a 100% defect free product
- Minimum 5 microns of tin plating on terminal for easy soldering

Electrical

| | |
|----------------------------------|----------------------------|
| Current: | 24A @ 300V |
| Wire Range: | 12-30 AWG |
| Wire Section: (mm ²) | 0.05 to 4mm ² |
| Pin Dimension: | 1mm x 0.8mm |
| CR: | <15mΩ |
| Operating temp: | -40°C - +110°C |
| Stripping Length: | 6.5mm |
| Torque: | 0.5 Nm |
| PCB Holes: | min 1.4mm |
| PCB Thickness: | max 2.4mm |
| Climatic Category: | 40/110/21 Acc. To IEC 68-1 |

Materials

| | |
|-------------------|-----------------------------|
| Housing: | Polyamide 6,6 (UL 94V-O) |
| Clamp: | Copper Alloy, NI plated |
| Terminal: | Copper Alloy, Tin-plated |
| Screw: | M3, Copper Alloy, Ni plated |
| Colors Available: | Green and Black |

Marking

Numbered marking strips for 5 and 5.08mm centers

| <u>Numbered</u> | <u>Order Number</u> |
|-----------------|---------------------|
| 1-10 | ESA014000110 |
| 11-20 | ESA014001120 |
| 21-30 | ESA014002130 |
| 31-40 | ESA014003140 |
| 41-50 | ESA014004150 |

Ink marking by factory (specify in order number):

Factory ink is permanent and will not rub off.

Ink has fluorescent tint for greater visibility

0 = no printing

A= upside down printing (consecutive #'s R to L)

B= regular printing (consecutive #'s L to R)

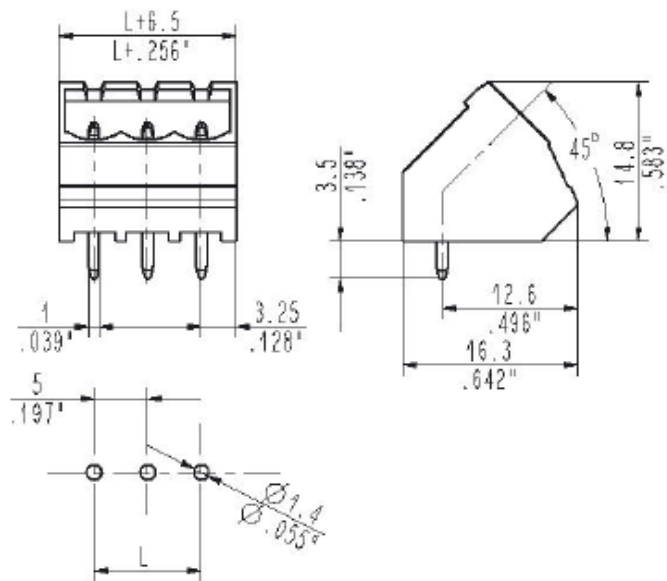
Custom markings are welcome with minimum order - Contact factory

24A 300V

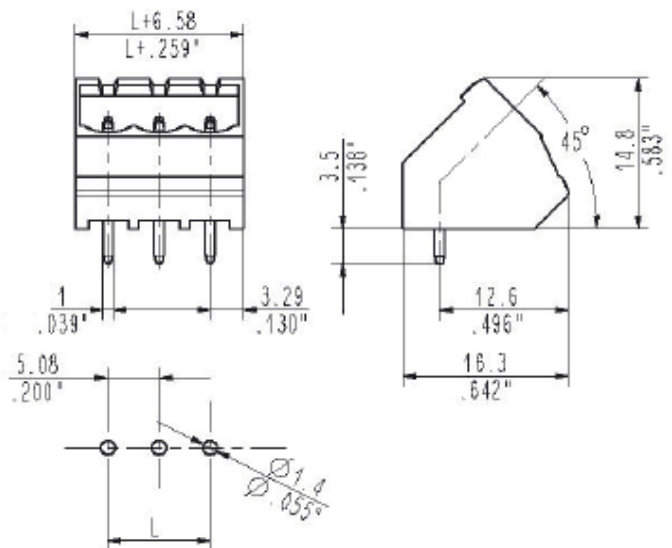
5 and 5.08mm



**5.00mm
CIMxx4P1(-ON)**



**5.08mm
CIMxx4P5(-ON)**



Dimensions

n = number of poles

$L=(n-1) \times 5.08$ (for 5.08mm spacing)