

Specifications 675-1 Series

Features:

- *Compact 3.81mm spacing
- *Available in several colors for coding positions to wire colors
- *1 position modular blocks
- *2 pins per pole for stability
- *No exposed metal parts

Electrical

- Current: 10A @ 300V
- Wire range: 14 to 20 Sol
- Wire range: 16 to 20 Str
- Wire section(mm²): 0.5 to 1.5mm²
- Pin dimension: 0.8mm x 0.5mm
- Dielectric strength: 4kV
- IR: >5MΩ (500V DC)
- Operating temp: -40°C to +105°C
- Stripping length: 9mm
- PCB holes: min 1.1mm
- PCB thickness: max 2.4mm

Materials

- Housing/button: Polyamide 6,6 (UL94V-0)
- Contact spring: Stainless steel
- Terminal pins: Brass, silver and tin plated
- Colors available: Gray (standard), for others see how to order

Specifications 675-3 Series

Features:

- *Standard 5mm spacing
- *Available in several colors for coding positions to wire colors
- *Available with or without push button
- *1 position modular blocks
- *2 pins per pole for stability
- *No exposed metal parts

Electrical

- Current: 10A @ 300V
- Wire range: 14 to 20 Sol
- Wire range: 16 to 20 Str
- Wire section(mm²): 0.5 to 1.5mm²
- Pin dimension: 0.8mm x 0.5mm
- Dielectric strength: 4kV
- IR: >5MΩ (500V DC)
- Operating temp: -40°C to +105°C
- Stripping length: 9mm
- PCB holes: min 1.1mm
- PCB thickness: max 2.4mm

Materials

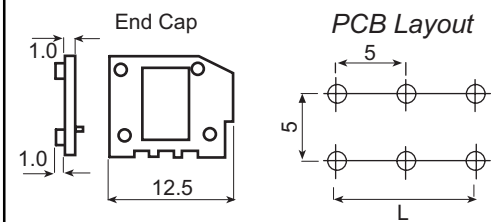
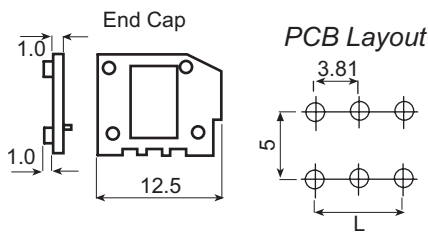
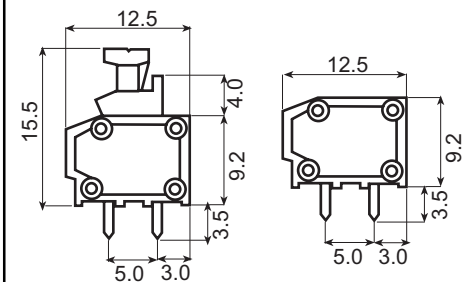
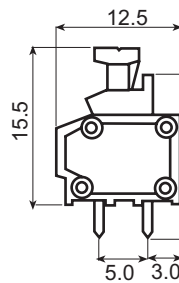
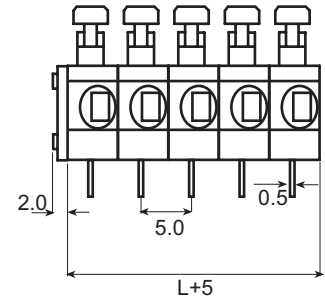
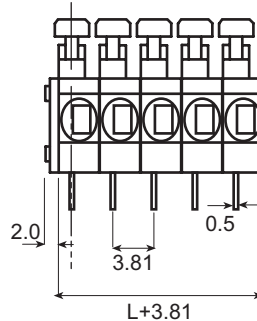
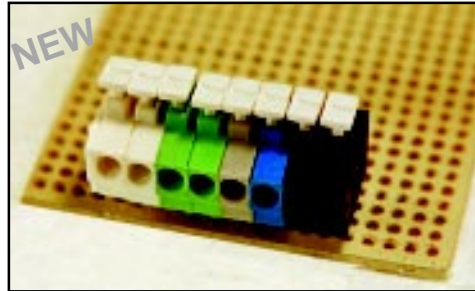
- Housing/button: Polyamide 6,6 (UL94V-0)
- Contact spring: Stainless steel
- Terminal pins: Brass, silver and tin plated
- Colors available: Gray (standard), for others see how to order

10A 300V

3.81mm

10A 300V

5mm



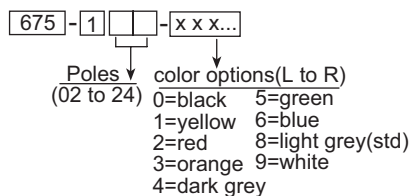
Dimensions

n=number of poles
L=(n-1) x 3.81

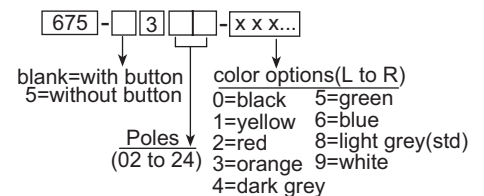
Dimensions

n=number of poles
L=(n-1) x 5

Ordering Information



Ordering Information



Also available in 7.5mm and 10mm centers.