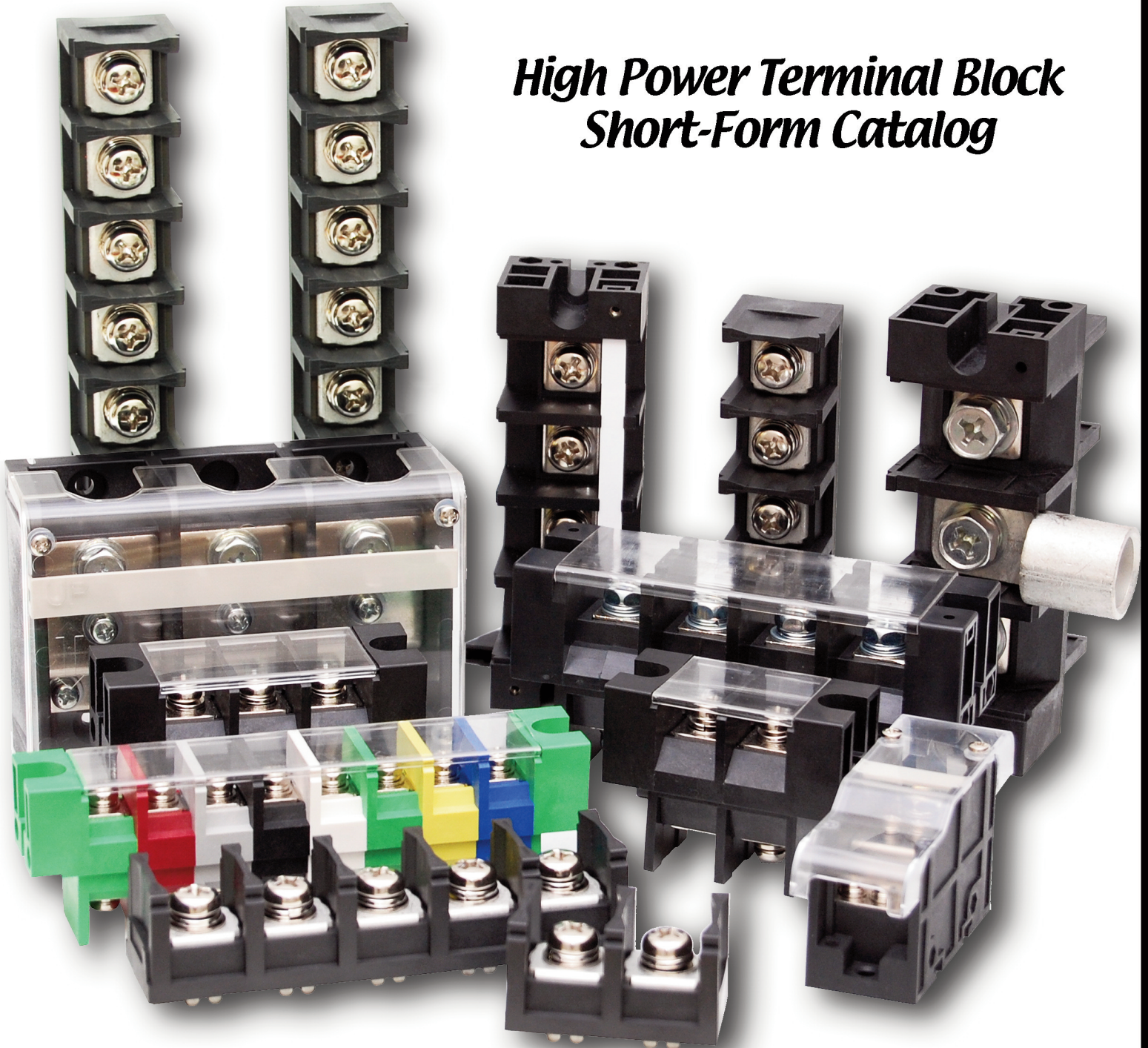


TOWERS OF POWER

Our High Power Blocks Stand Tall

High Power Terminal Block Short-Form Catalog



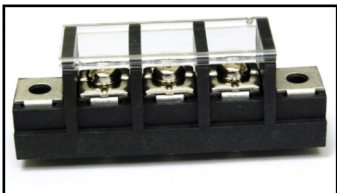
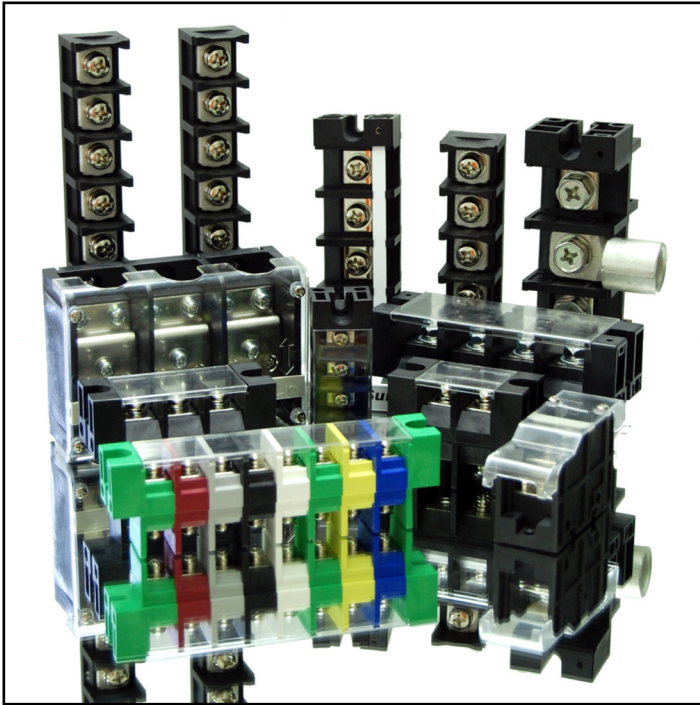
BLOCK MASTER BLOCKS
™

World Class Terminal Blocks

**1400 Howard Street
Elk Grove Village, IL 60007
(800) 595-8881
www.BLOCKMASTER.com**

More Power To You!

BlockMaster's 25 - 250A High-Power Terminal Blocks



Thank you for your interest in one of BlockMaster's most exciting product lines: our **HIGH-POWER** terminal block series!

The blocks in our High-Power series start at 25A@300V and are available up to 250A@600V. They are offered in both PC board and thru-panel styles. The majority of the blocks are offered with clear plastic covers for further protection during field installation, and all of them have UL approval and are completely RoHS compliant.

Some of the ideal applications for our high-power series include power supplies, HVAC controls, motor controls, industrial controls, off-road vehicles and so much more. With power like this, we're sure these blocks will end up in countless solutions! Just call BlockMaster and let us help you find the perfect block for your application.

This is an exciting time as BlockMaster continues to broaden our offerings in order to provide the most comprehensive terminal block selection in the market. Full technical specifications for all products listed in this brochure are also available on our website, www.blockmaster.com. We are also continually updating the website as new product becomes available.

If we can provide any additional assistance, samples or technical help, please feel free to contact us. In addition to the new brochure, BlockMaster can also offer a variety of sample kits and additional support items.



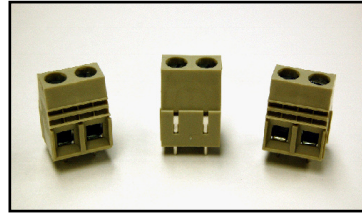
Phone: (800) 595-8881

Fax: (847) 956-1690

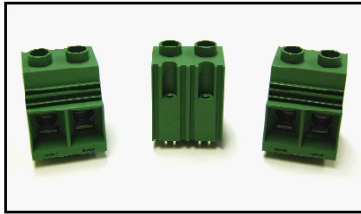
1400 Howard Street
Elk Grove Village, IL 60007

www.BLOCKMASTER.com

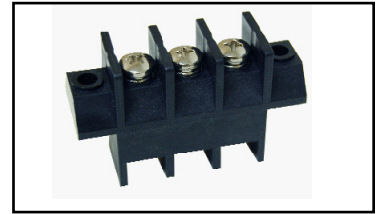
MH-120-016M4
 Modular, Printed-Circuit
 Terminal Block
 300V / 65A



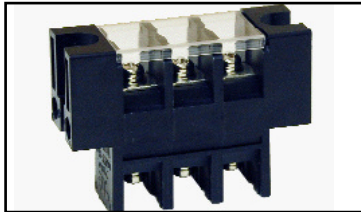
MH-130-1505
 Modular, Printed-Circuit
 Terminal Block
 600V / 125A



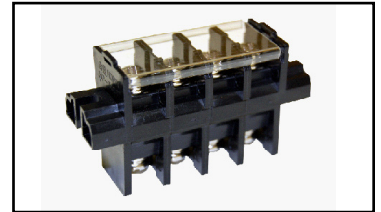
OGM-300N
 Thru-Panel Terminal
 Block
 300V / 25A



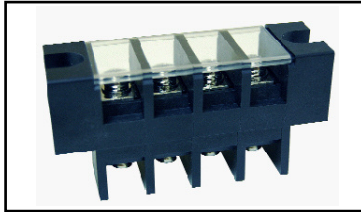
OTB-330NE
 Thru-Panel Terminal
 Block
 600V / 50A



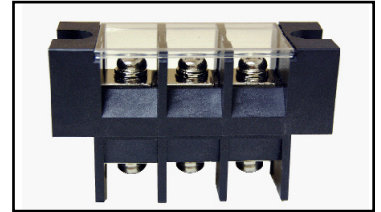
OTB-351
 Thru-Panel Terminal
 Block
 300V / 20A



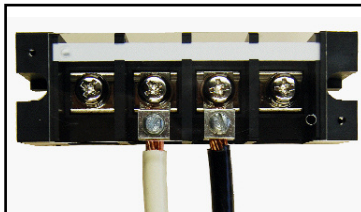
OTB-358N
 Modular, Thru-Panel
 Terminal Block
 600V / 100A



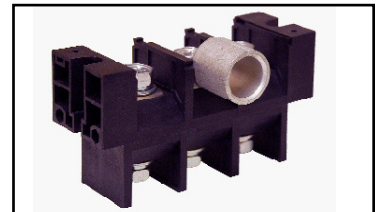
OTB-388
 Thru-Panel Terminal
 Block
 600V / 100A



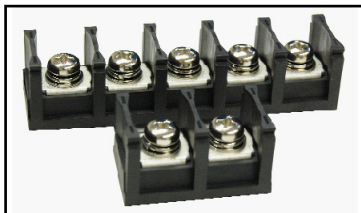
OTB-488
 Thru-Panel Terminal
 Block
 600V / 150A



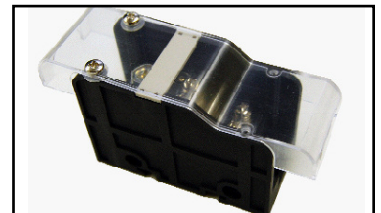
OTB-588
 Thru-Panel Terminal
 Block
 600V / 250A



OTB-1500N
 PCB Terminal Block
 600V / 130A



OTP-80
 Panel-Distribution
 Terminal Block
 600V / 80A



Brand New! Unique Product Development!

Modular Printed-Circuit High-Power Block

10.16mm

300 Volts / 65 Amps

PART#:

MH120-016M4

Type:

Modular Printed Circuit High-Power Terminal Block

Features:

High-Power, Modular Design

Applications:

Suitable for:
Power Supplies
Back Planes
Industrial Controls
HVAC Controls
Motor Controls

Electrical

Rated Voltage:

300V

Rated Current:

65A

Wire Size:

6-26 AWG
Solid or Stranded

Operating Temperature:

-40C to +105C

Materials

Housing:

Polyamide 66 (UL94V-0)
Standard Color: Green

Terminal:

Copper, Tin-Plated

Positions Available:

2 to 3 Single
Up to 24 Modular

Screw Size:

M4.0, Steel, Zinc-Plated

Cage Clamp:

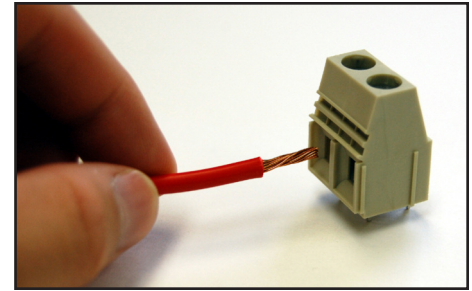
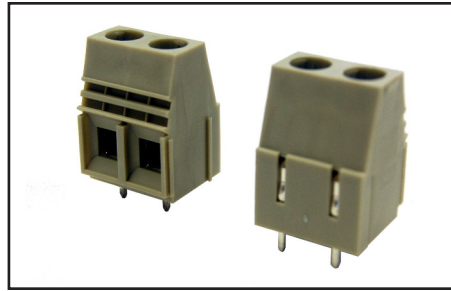
Steel, Zinc-Plated

Torque:

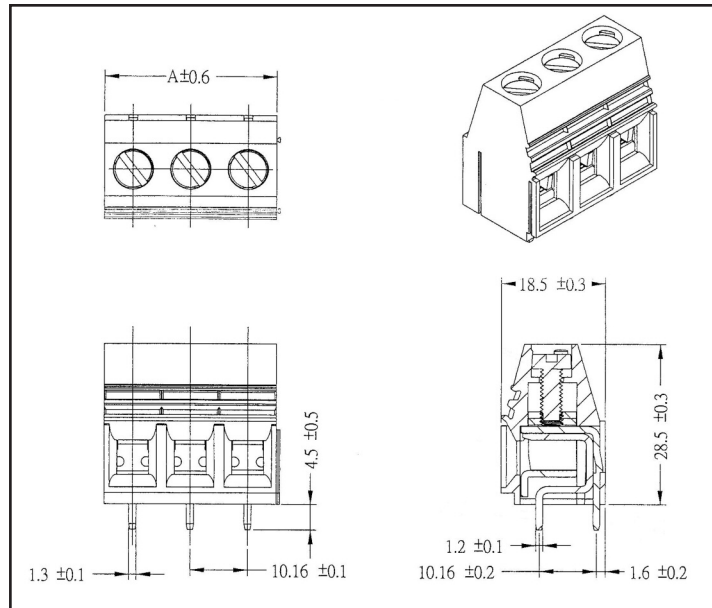
20.5 lbs. per inch

PCB Hole Diameter:

1.6 mm



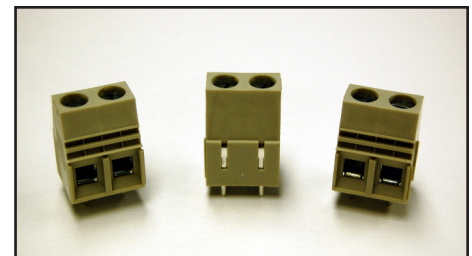
(10AWG Wire Shown)



BlockMaster Electronics' new MH Series are modular, high-power terminal blocks available in 2-6 positions as modules.

These modules can be assembled in combinations to accommodate up to 24 positions. Connect up to 65A to your PC board!

If your application requires the connection of large gauge wires to PC boards, BlockMaster's MH series are the blocks for you.



HOW TO ORDER:

MH120-016M4□□

□□ : Poles
016 : Pitch 10.16mm
120 : STANDARD
MH : Type



4/09/08

World Class Terminal Blocks

1400 Howard Street Phone: (847) 956-1680
Elk Grove Village, IL 60007 Fax: (847) 956-1690

www.BlockMaster.com

Brand New! Unique Product Development!

Modular Printed-Circuit High-Power Block

15mm

600 Volts / 125 Amps

PART#:

MH130-1505

Type:

Modular Printed Circuit High-Power Terminal Block

Features:

High-Power, Side-Stackable Design

Applications:

Suitable for:
Power Supplies
Back Planes
Industrial Controls
HVAC Controls
Motor Controls

Electrical

Rated Voltage:

600V UL

Rated Current:

125A

Wire Size:

2-20AWG
Stranded

Operating Temperature:

-40C to +105C

Materials

Housing:

Polyamide 66 (UL94V-0)
Standard Color: Green

Terminal:

Copper, Tin-Plated

Positions Available:

2 to 8 Single
2 to 24 Side-Stackable

Screw Size:

M5.0, Steel, Zinc-Plated

Cage Clamp:

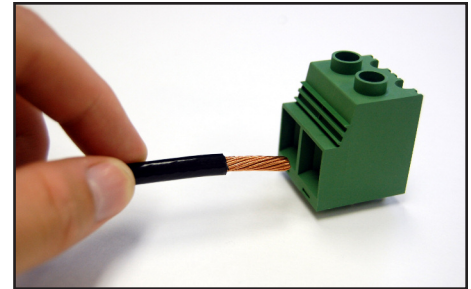
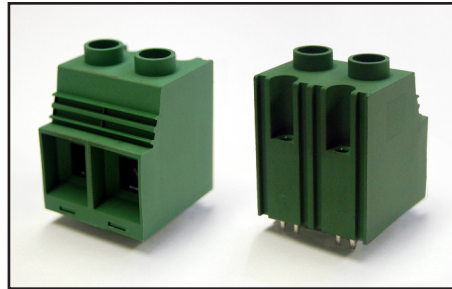
Steel, Zinc-Plated

Torque:

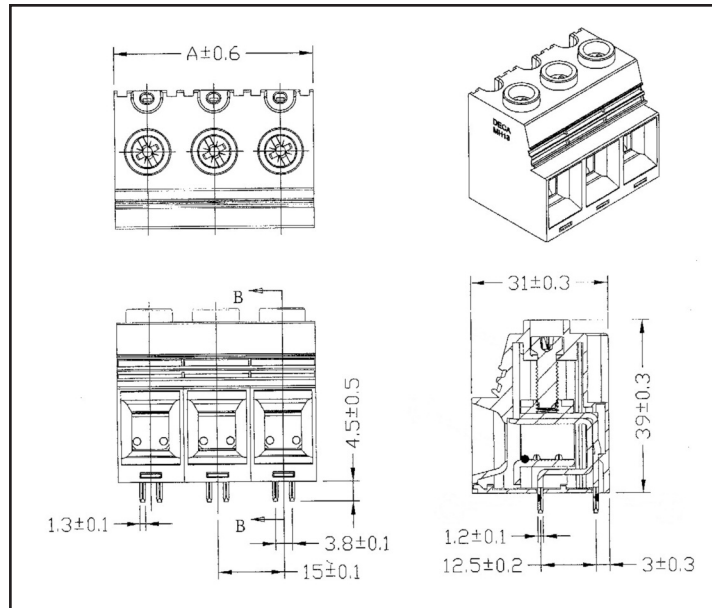
30 lbs. per inch

PCB Hole Diameter:

1.6 mm



(2AWG Wire Shown)



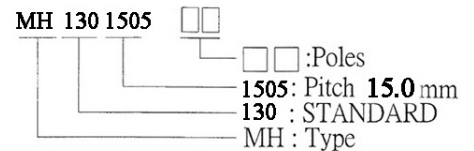
BlockMaster Electronics' new MH Series are modular, high-power terminal blocks available in 2-8 positions as singles.

These modules can be side-stacked in combinations to accommodate up to 24 positions. Connect up to 125A to your PC board!

If your application requires the connection of large-gauge wires to PC boards, BlockMaster's MH series are the blocks for you.



HOW TO ORDER:



World Class Terminal Blocks

4/09/08

1400 Howard Street Phone: (847) 956-1680
Elk Grove Village, IL 60007 Fax: (847) 956-1690

www.BlockMaster.com

Brand New! Unique Product Development!

Medium-Power Thru-Panel Terminal Block

Pitch: 11mm

300 Volts / 25 Amps

PART#:

OGM-300NE

Type:

Medium-Power Thru-Panel

Features:

Thru-Panel Barrier Construction

Applications:

- Suitable for:
- Motor Controls
- Electric Heaters
- Industrial Controls
- Pumps
- Power Supplies
- Lighting

Electrical

Rated Voltage:

300V

Rated Current:

25A

Wire Size:

14-22 AWG

Operating Temperature:

-40C to +90C

Materials

Housing:

Polycarbonate (UL94V-0)

Standard Color: Black

Cover:

Polycarbonate (UL94V-0), Clear

Terminal:

Brass, Nickel-Plated

Positions Available:

2-23

Screw Size:

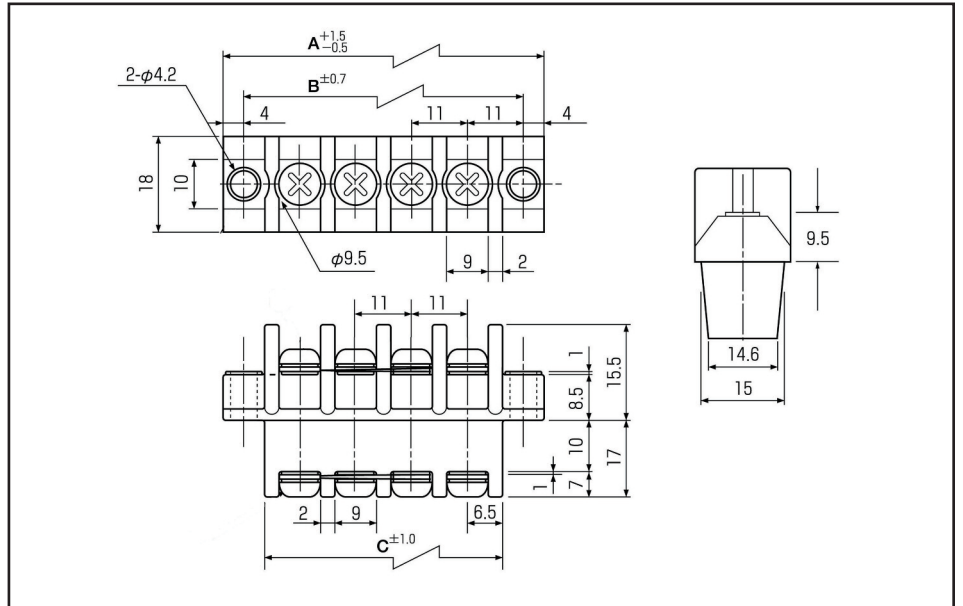
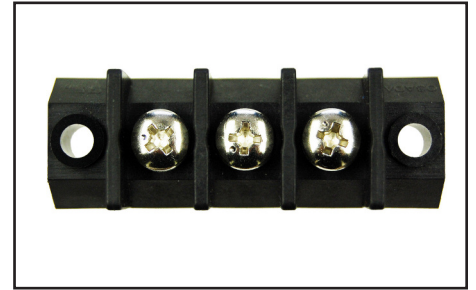
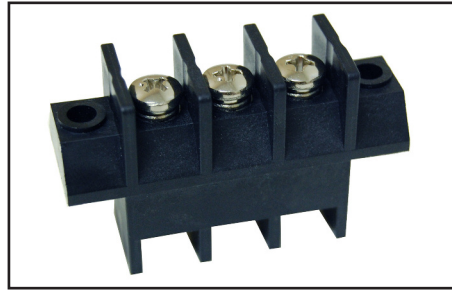
M4, Brass, Nickel-Plated

Withstanding Voltage:

AC2000V

Torque:

1.2 lbs. per inch



BlockMaster Electronics' new OGM-300NE Series are medium-power, thru-panel terminal blocks available in 2-23 positions.

BlockMaster's OGM-300NE series are perfect for interfacing internally wired products to the outside world. Each terminal has a screw with lockwasher for convenient field wiring. Suitable for motor controls, electric heaters, industrial controls or any medium-power field wiring to control box application.



HOW TO ORDER:

OGM-300NE--P

**Poles
2-23**



World Class Terminal Blocks

1400 Howard Street Phone: (847) 956-1680
Elk Grove Village, IL 60007 Fax: (847) 956-1690

www.BlockMaster.com

4/09/08

Brand New! Unique Product Development!

Medium-Power Thru-Panel Terminal Block

Pitch: 13mm

600 Volts / 50 Amps

PART#:

OTB-330N

Type:

Medium-Power Thru-Panel

Features:

SEMS Screws
Plastic Finger-Safe Cover Included

Applications:

Suitable for:
Power Supplies
Industrial Controls
Motor Drives
Variable-Speed Controls
All Thru-Panel, Medium-Power
Current Applications

Electrical

Rated Voltage:

600V

Rated Current:

50A

Wire Size:

12-22 AWG CU

Operating Temperature:

-40C to +90C

Materials

Housing:

Polycarbonate (UL94V-0)
Standard Color: Black

Cover:

Polycarbonate (UL94V-0), Clear

Terminal:

Brass, Nickel Plated

Positions Available:

2-15

Screw Size:

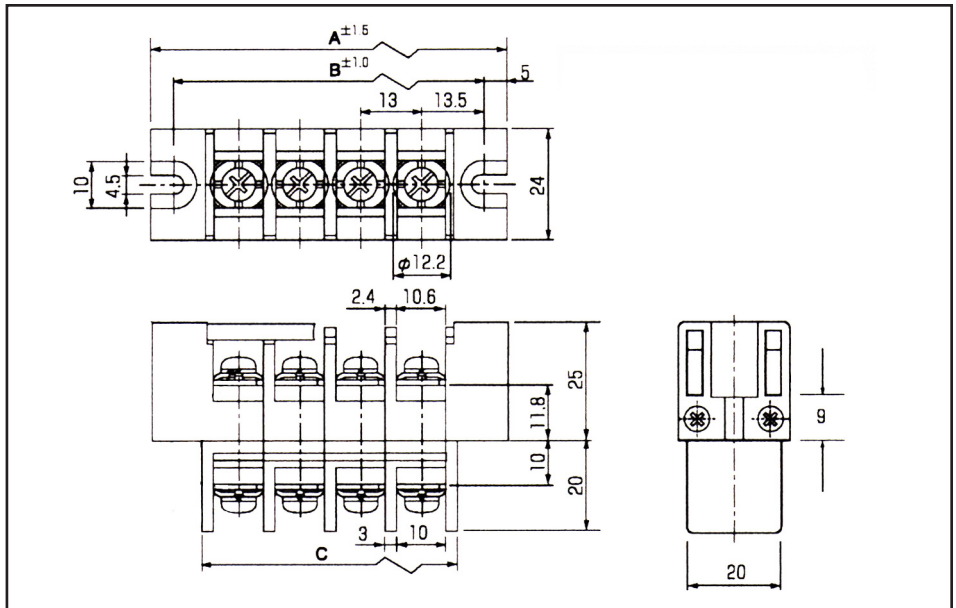
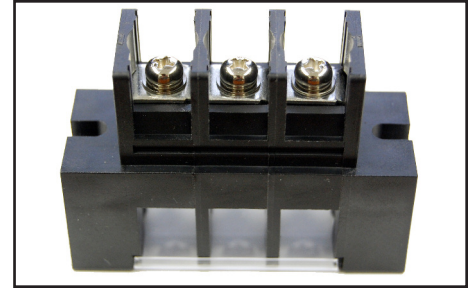
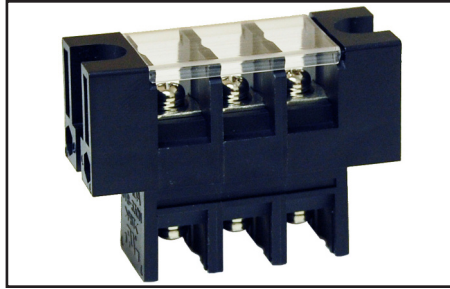
M4, Steel, Nickel-Plated

Withstanding Voltage:

AC2500V

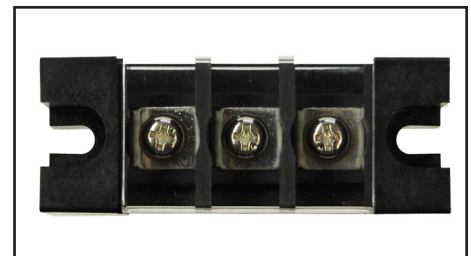
Torque:

12.4 lbs. per inch



BlockMaster Electronics' new OTB-330N Series are medium-power, thru-panel terminal blocks available in 2-15 positions.

BlockMaster's OTB-330N series are perfect for interfacing internally wired products to the outside world. They offer a clear, protective cover to reduce shock hazard, and each terminal has a screw with lockwasher for convenient field wiring. Suitable for industrial controls, spa controls or any medium-power field wiring to control box application.



HOW TO ORDER:

OTB-330N - - **P**

**Poles
2-15**



World Class Terminal Blocks

4/09/08

1400 Howard Street Phone: (847) 956-1680
Elk Grove Village, IL 60007 Fax: (847) 956-1690

www.BlockMaster.com

Brand New! Unique Product Development!

Modular Thru-Panel Medium-Power Block

Pitch: 8.5mm

300 Volts / 20 Amps

PART#:
OTB-351

Type:
Medium-Power Thru-Panel

Features:
SEMS Screws
Plastic, Finger-Safe Cover Included

Applications:
Suitable for:
Power Supplies
Servo & Variable Frequency
Motor Drives
Lighting
Industrial Controls
Electric Heating

Electrical

Rated Voltage:
300V

Rated Current:
20A

Wire Size:
12-22 AWG

Operating Temperature:
-30C to +80C

Materials

Housing:
Polycarbonate (UL94V-0)
Standard Color: Black

Cover:
Polycarbonate (UL94V-0), Clear

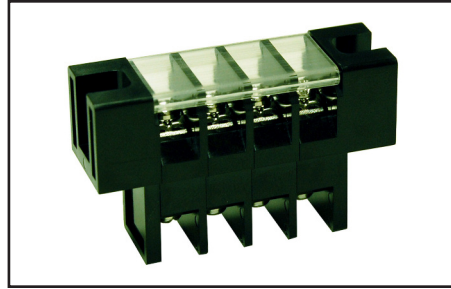
Terminal:
Brass, Nickel-Plated

Positions Available:
2-15

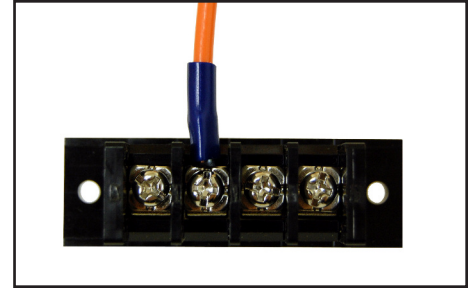
Screw Size:
M3.0 and M3.5, Steel, Nickel-Plated

Withstanding Voltage:
AC2000V

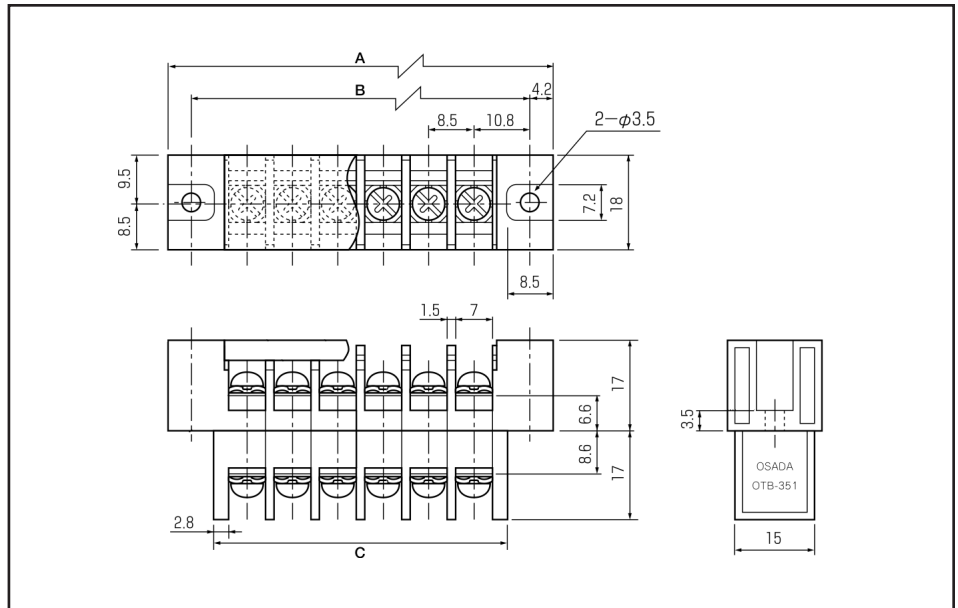
Torque:
8.85 lbs. per inch



OTB-351 with clear cover installed

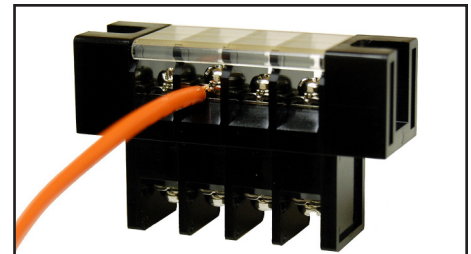


(Typical Application)



BlockMaster Electronics' new OTB-351 Series are medium-power, thru-panel terminal blocks available in 2-15 positions.

BlockMaster's OTB-351 series are perfect for interfacing internally wired products to the outside world. They offer a clear, protective cover to reduce shock hazard, and each terminal has a SEMS screw for convenient field wiring as shown. Suitable for industrial controls, spa controls or any medium-power field wiring to control box application.



HOW TO ORDER:

OTB-351 - - **P**

**Poles
2-15**



World Class Terminal Blocks

4/09/03

1400 Howard Street Phone: (847) 956-1680
Elk Grove Village, IL 60007 Fax: (847) 956-1690

www.BlockMaster.com

Brand New! Unique Product Development!

Modular Thru-Panel Medium-Power Block

Pitch: 16mm

600 Volts / 100 Amps

PART#:
OTB-358N

Type:
Medium-Power Thru-Panel

Features:
Thru-Panel, Barrier Construction
Plastic, Finger-Safe Cover Included

Applications:
Suitable for:
Motor Controls
Industrial Controls
Pump Controls
Electrical Switch Gear
Off-Highway Vehicles

Electrical
Rated Voltage:
600V

Rated Current:
100A

Wire Size:
3-10AWG CU

Operating Temperature:
-40C to +90C

Materials

Housing:
Polycarbonate (UL94V-0)
Standard Color: Black

Cover:
Polycarbonate (UL94V-0), Clear

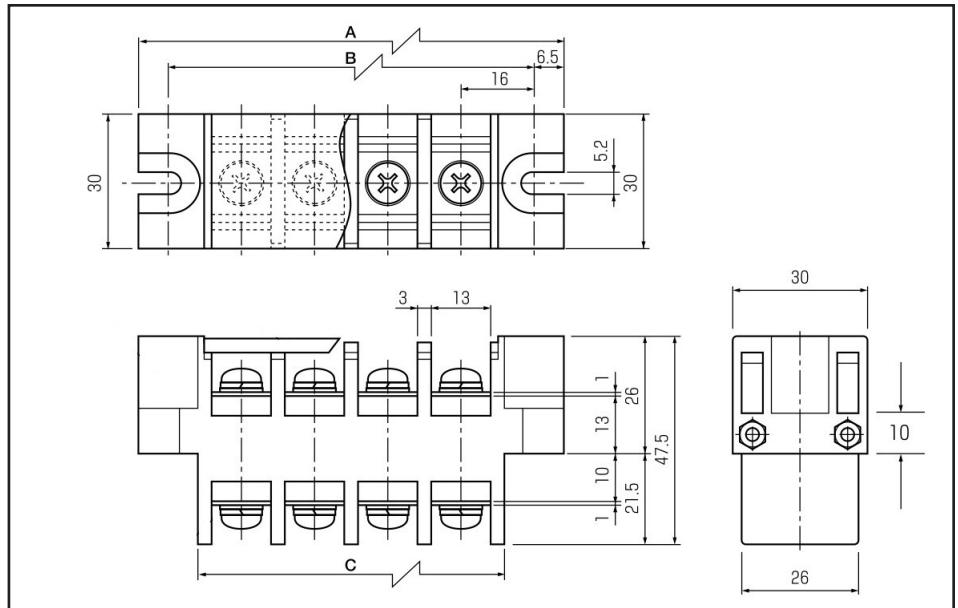
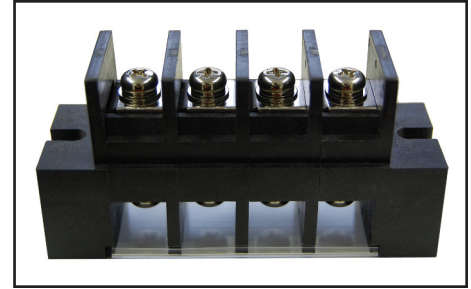
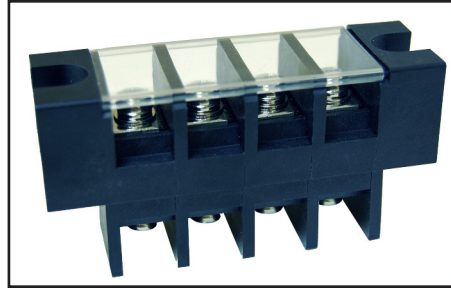
Terminal:
Brass, Nickel-Plated

Positions Available:
2-15

Screw Size:
M5x12L, Steel, Nickel-Plated

Withstanding Voltage:
AC2500V

Torque:
18 lbs. per inch

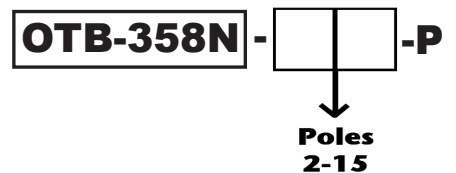


BlockMaster Electronics' new OTB-358 Series are medium-power, thru-panel terminal blocks available in 2-15 positions.

BlockMaster's OTB-358 series are perfect for interfacing internally wired products to the outside world. They offer a clear, protective cover to reduce shock hazard, and each terminal has a screw with lockwasher for convenient field wiring. These blocks are suitable for industrial controls, spa controls or any medium-power field wiring to control box application.



HOW TO ORDER:



4/09/08

World Class Terminal Blocks

1400 Howard Street Phone: (847) 956-1680
Elk Grove Village, IL 60007 Fax: (847) 956-1690

www.BlockMaster.com

Brand New! Unique Product Development!

High-Power Thru-Panel Terminal Block

Pitch: 21mm

600 Volts / 100 Amps

PART#:
OTB-388

Type:
High-Power Thru-Panel

Features:
Thru-Panel Barrier Construction
Plastic, Finger-Safe Cover Included
SEMS Screws

Applications:
Suitable for:
Electrical Switch Gear
Motor Controls
Motor/Gen Sets
Electric Heating
Spa Controls
Off-Highway Vehicles

Electrical

Rated Voltage:
600V

Rated Current:
100A

Wire Size:
2-8 AWG CU

Operating Temperature:
-40C to +90C

Materials

Housing:
Polycarbonate (UL94V-0)
Standard Color: Black

Cover:
Polycarbonate (UL94V-0), Clear

Terminal:
Brass, Nickel-Plated

Positions Available:
2-15

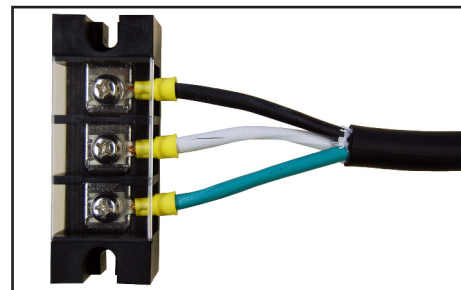
Screw Size:
M6, Steel, Nickel-Plated

Withstanding Voltage:
AC2500V

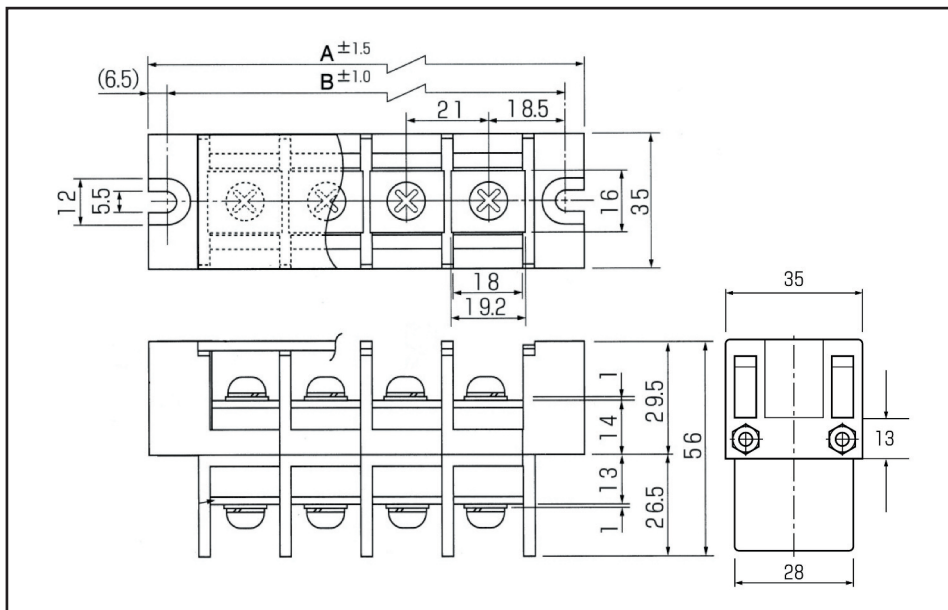
Torque:
26 lbs. per inch



OTB-388 with clear cover installed

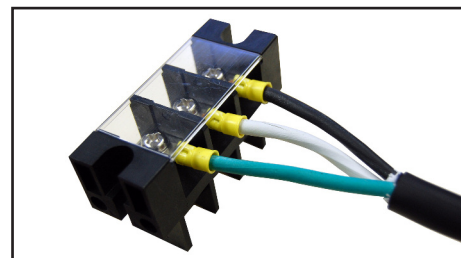


(Typical Application)

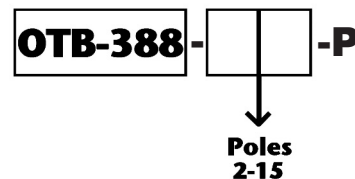


BlockMaster Electronics' new OTB-388 Series are medium-power, thru-panel terminal blocks available in 2-15 positions.

BlockMaster's OTB-388 series are perfect for interfacing internally wired products to the outside world. They offer a clear, protective cover to reduce shock hazard, and each terminal has a SEMS screw for convenient field wiring as shown. Suitable for industrial controls, spa controls or any medium-power field wiring to control box application.



HOW TO ORDER:



4/09/08

1400 Howard Street Phone: (847) 956-1680
Elk Grove Village, IL 60007 Fax: (847) 956-1690

www.BlockMaster.com

Brand New! Unique Product Development!

Medium-Power Thru-Panel Terminal Block

Pitch: 27mm

600 Volts / 150 Amps

PART#:
OTB-488

Type:
High-Power Thru-Panel

Features:
Thru-Panel, Barrier Construction
Plastic, Finger-Safe Cover
Marker Strip Included

Applications:
Suitable for:
Electrical Switch Gear
Motor Controls
Motor/Gen Sets
Electric Heating
Spa Controls
Custom Control Panels

Electrical

Rated Voltage:
600V

Rated Current:
150A

Wire Size:
3-10 AWG

Operating Temperature:
-40C to +90C

Materials

Housing:
Polycarbonate (UL94V-0)
Standard Color: Black

Cover:
Polycarbonate (UL94V-0), Clear

Terminal:
Brass, Nickel-Plated

Positions Available:
2-15

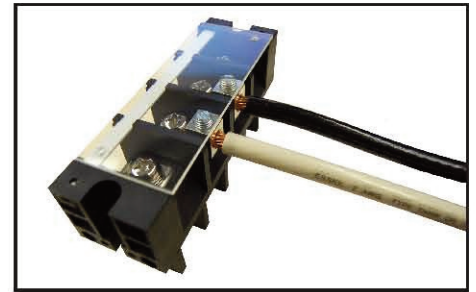
Screw Size:
M6, Brass, Nickel-Plated

Withstanding Voltage:
AC2500V

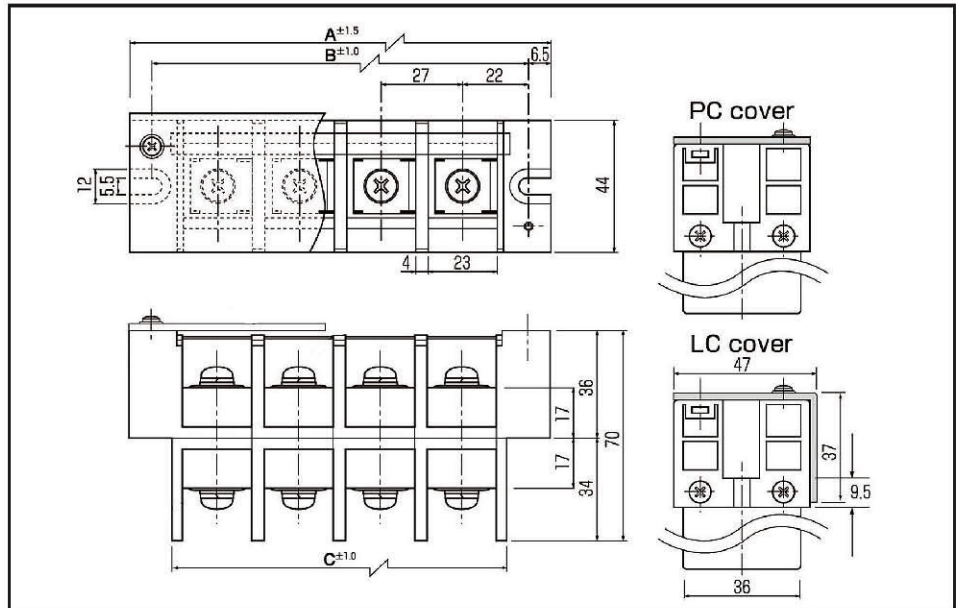
Torque:
22 lbs. per inch



OTB-488 with marker strip installed

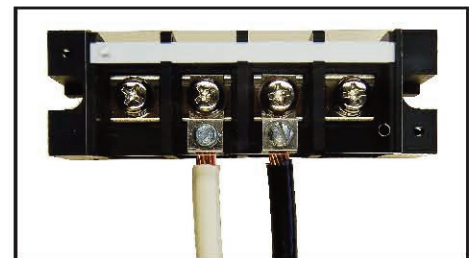


(Typical Application)

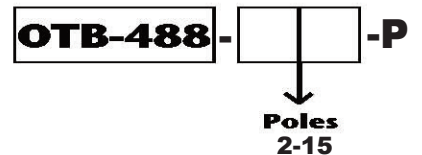


BlockMaster Electronics' new OTB-488 Series are medium-power, thru-panel terminal blocks available in 2-15 positions.

BlockMaster's OTB-488 series are perfect for interfacing internally wired products to the outside world. They offer a clear, protective cover to reduce shock hazard, and each terminal has a SEMS screw for convenient field wiring as shown. Suitable for industrial controls, spa controls or any medium-power field wiring to control box application.



HOW TO ORDER:



1400 Howard Street Phone: (847) 956-1680
Elk Grove Village, IL 60007 Fax: (847) 956-1690

www.BlockMaster.com

4/09/08

Brand New! Unique Product Development!

High-Power Thru-Panel Terminal Block

Pitch: 35mm

600 Volts / 250 Amps

PART#:
OTB-588

Type:
High-Power Thru-Panel

Features:
Thru-Panel Barrier Construction
Optional Clear Plastic Cover

Applications:
Suitable for:
Electrical Switch Gear
Off Highway Vehicles

Electrical
Rated Voltage:
600V

Rated Current:
250A

Wire Size:
4/0 Stranded CU

Operating Temperature:
-40C to +90C

Materials
Housing:
Polycarbonate (UL94V-0)
Standard Color: Black

Cover:
Polycarbonate (UL94V-0)

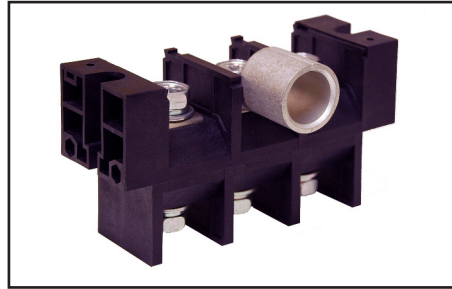
Terminal:
Copper, Nickel-Plated

Positions Available:
1-12

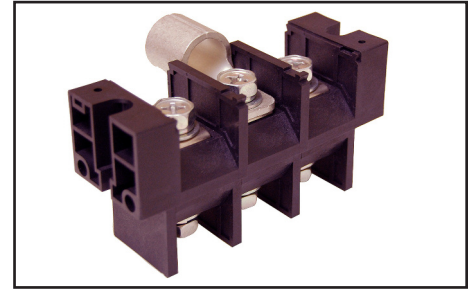
Bolt Size:
M10, Steel

Withstanding Voltage:
AC2500V

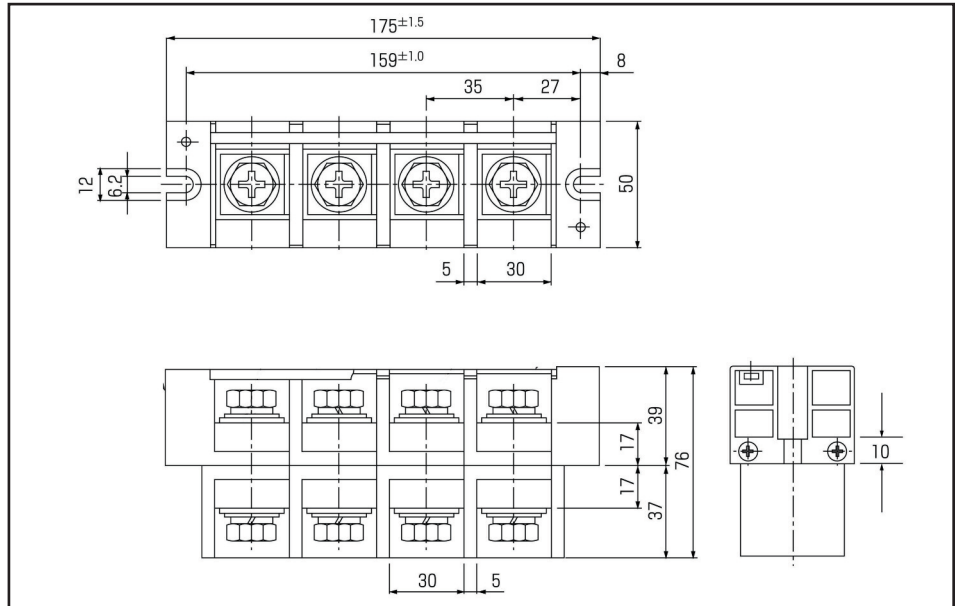
Torque:
30 lbs. per inch



OTB-588



Typical Application

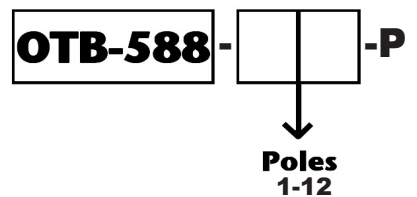


BlockMaster Electronics' new OTB-588 Series are high-power, thru-panel terminal blocks available in 1-12 positions.

BlockMaster's OTB-588 series are perfect for interfacing internally wired products to the outside world. They offer a clear, protective cover to reduce shock hazard, and each terminal has a hex head screw with lock washer for convenient field wiring. Suitable for industrial controls, electrical switch gear or any high-power application.



HOW TO ORDER:



4/09/08

1400 Howard Street Phone: (847) 956-1680
Elk Grove Village, IL 60007 Fax: (847) 956-1690

www.BlockMaster.com

Brand New! Unique Product Development!

PCB Terminal Block

Pitch: 26mm

600 Volts / 130 Amps

PART#:
OTB-1500N

Type:
PCB Terminal Block

Features:
Barrier Construction
UL Recognized
Optional Cover Available
With or Without Mounting Ears

Applications:
Suitable for:
Power Supplies
Back Planes
Motor Controls
Industrial Controls

Electrical

Rated Voltage:
600V

Rated Current:
130A

Wire Size:
1-3 AWG

Operating Temperature:
-40F to +90C

Materials

Housing:
Polycarbonate (UL94V-0)
Standard Color: Black

Cover:
Polycarbonate (UL94V-0)

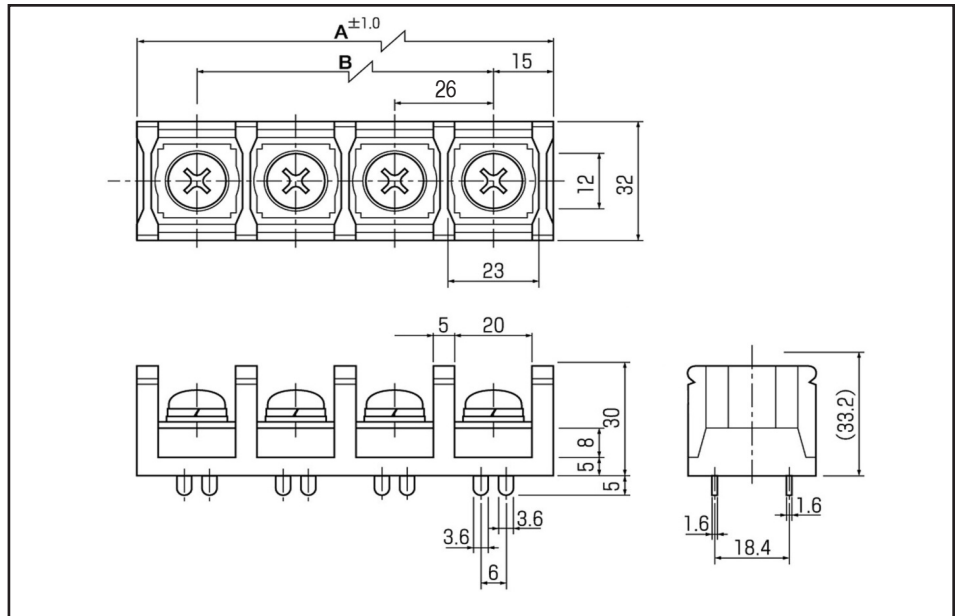
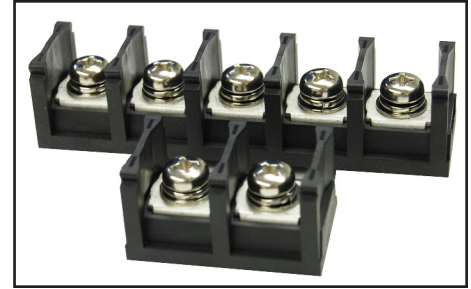
Terminal:
Brass, Tin, Nickel or Gold Plated

Screw Size:
M5 Steel, Nickel-Plated

Withstanding Voltage:
AC2500V

Torque:
53.1 lbs. per inch

Insulation Resistance:
AC2500V

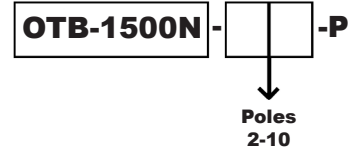


BlockMaster Electronics' new OTB-1500 series is a high-power PC board, barrier-style terminal block. This block allows you to terminate up to 100 AMPS per position. It has very heavy-duty PC terminals.

An optional cover is available for finger-safe applications. If your application requires the connection of large-gauge wire to PC boards, BlockMaster's OTB-1500 are the blocks for you.



HOW TO ORDER:



1400 Howard Street Phone: (847) 956-1680
Elk Grove Village, IL 60007 Fax: (847) 956-1690

www.BlockMaster.com

4/09/08

Brand New! Unique Product Development!

Panel-Distribution Power Block

600 Volts / 80 Amps

PART#:
OTP-80

Type:
Panel-Distribution Power Block

Features:
Marker Strip
Clear Plastic Safety Cover

Applications:
Suitable for:
Panels
HVAC Equipment
Pump Control Panels
Switch Gear
Lighting Panels

Electrical
Rated Voltage:
600V

Rated Current:
80A
Line Side: 80
Load All Circuits: 80

Wire Size:
Line: 4-10AWG
Load: 6-16AWG

Operating Temperature:
-40C to +90C

Materials
Housing:
Polycarbonate (UL94V-0)
Standard Color: Black

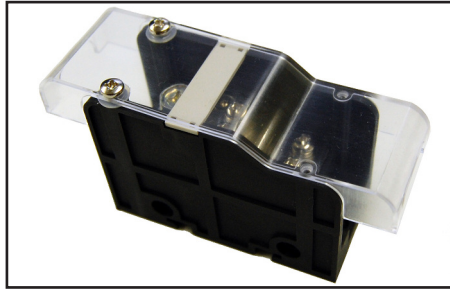
Cover:
Polycarbonate (UL94V-0)

Terminal:
Brass, Nickel-Plated

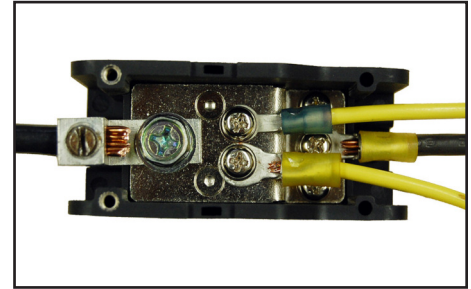
Screw Size:
Line Side: M8
Load Side: M5

Withstanding Voltage:
AC2500V

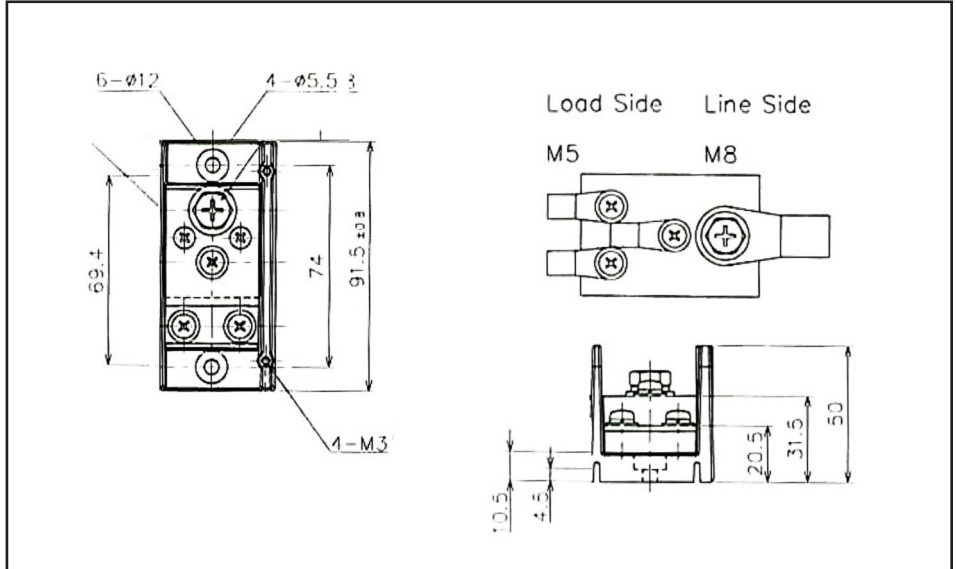
Torque:
Line Side: 41.6 lbs.
Load Side: 17.7 lbs.



OTP-80 with clear cover and marking strip installed



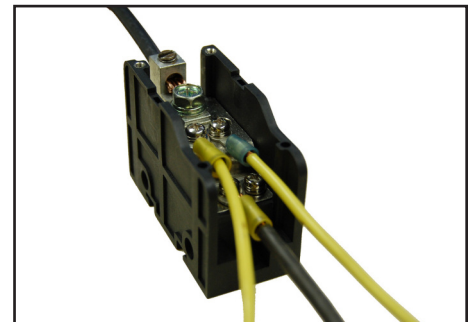
Typical Application: #6AWG Main to #12AWG & 1 #10AWG Branch Circuits



Presenting BlockMaster Electronics' new OTP-80 series panel-distribution power blocks.

The OTP-80 provides a convenient means of transitioning larger gauge, high-power mains to smaller gauge, lower-power branch circuits.

BlockMaster's OTP-80 series offers a convenient way to interface between your supply and larger gauge wire (#2-6 for example) and internally distribute smaller gauge wire (#12-18 for example). Perfect for panels and HVAC equipment.



HOW TO ORDER:



Poles
1-10



4/09/08

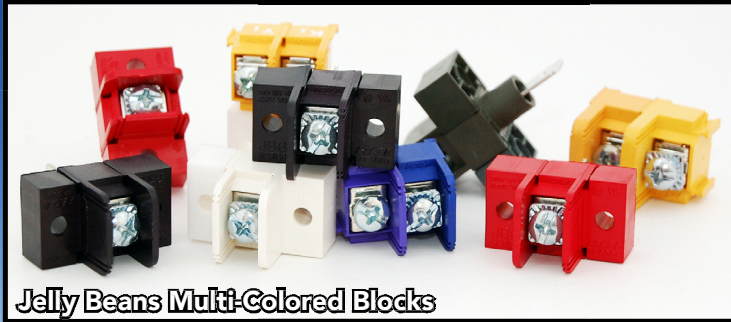
World Class Terminal Blocks

1400 Howard Street Phone: (847) 956-1680
Elk Grove Village, IL 60007 Fax: (847) 956-1690

www.BlockMaster.com

BLOCK MASTER BLOCKS
™
World Class Terminal Blocks

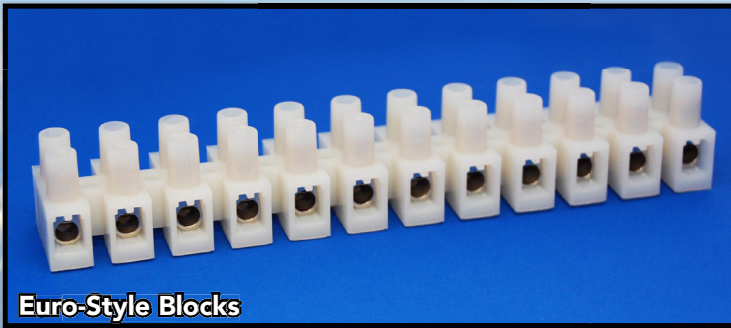
Be sure to visit
BlockMaster.com
to see all of our
exciting product lines!



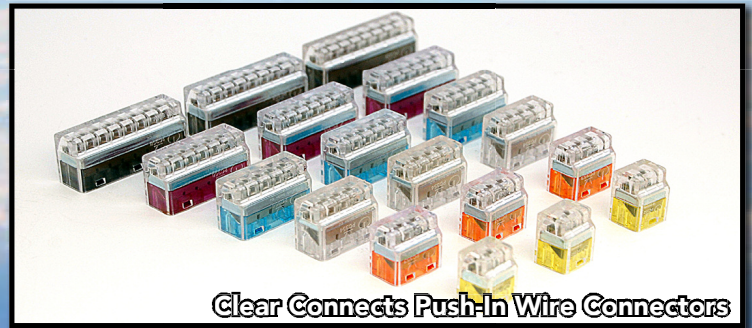
Jelly Beans Multi-Colored Blocks



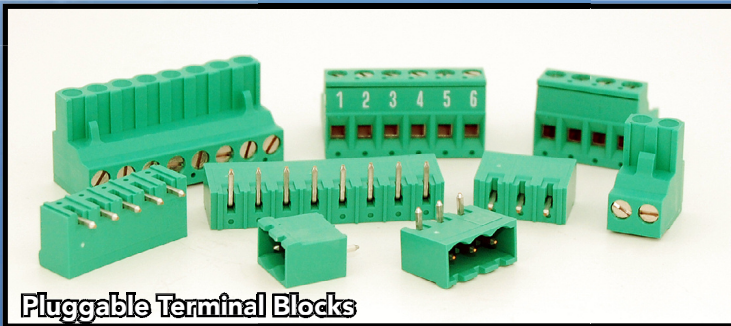
Phenolic Panel Mount Blocks



Euro-Style Blocks



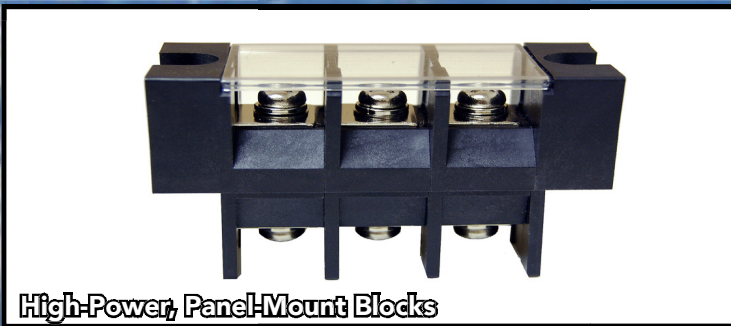
Clear Connects Push-In Wire Connectors



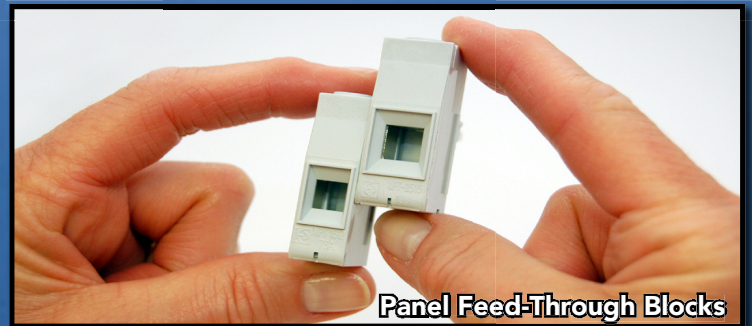
Pluggable Terminal Blocks



Wire Guard Terminal Blocks



High-Power, Panel-Mount Blocks



Panel Feed-Through Blocks

1400 Howard Street | Elk Grove Village, IL 60007

Phone: (800) 595-8881

www.BLOCKMASTER.com



Since 1994, BlockMaster has been committed to offering terminal block and barrier strip solutions. Our terminal blocks, manufactured internationally and domestically, are designed to meet and surpass agency approvals from around the world.

Many of our products conform to and surpass the standards of UL, CUL, VDE, CE and other international approvals. Your products will benefit from the quality that goes into our blocks. Our worldwide manufacturing allows for the continual introduction of new products, and our extensive inventory serves to keep your orders shipping on time.



World Class Terminal Blocks

**1400 Howard Street
Elk Grove Village, IL 60007
(800) 595-8881**

www.BLOCKMASTER.com