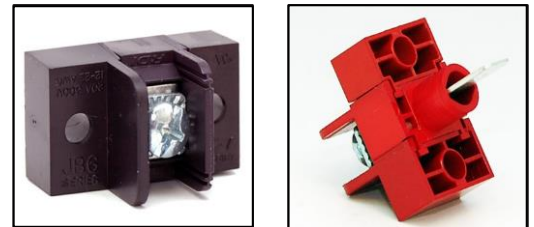


**JB6 Series  
 Modular, Color-Coded  
 Terminal Blocks**

**Eliminate the Problem of  
 Field Installation  
 Mistakes!**

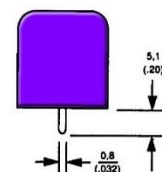
Never content to sell the same old blocks, we at BlockMaster have pushed the envelope yet again with another innovative series. This time we're targeting a very important segment of our customer base: the field engineers. We're sure they'll be happy to know that with our two lines of Jelly Beans terminal blocks, they'll never again have to worry about the age-old problem of incorrect field wiring. Both products can have a different color for each position, helping to eliminate installation mistakes.

The JB Series are modular, barrier-style terminal blocks that offer the ability to color-code each terminal to match customer wiring. This allows for the separation of line voltage from signal inputs and outputs. Single circuit modules snap together to form nearly infinite circuit configurations, and each position can be any of ten available colors. Standard design features include break-resistant barriers, standoffs for flux cleaning, and ready-to-wire screws. A full range of terminal configurations are offered on industry standard center-to-center spacings of 3/8" (0.375" or 9.50 mm).

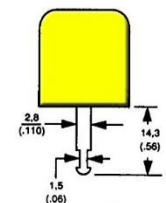


JB Series: Modular, Barrier-Style Blocks

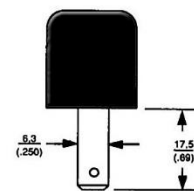
**Terminal Styles**



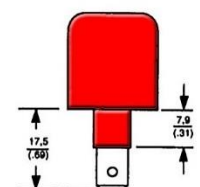
P.C. Pins



Solder Turret



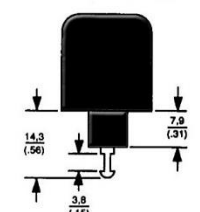
Quick Connect



Insulated Q.C.



Non-Feed-Thru



Insulated Solder Turret

**Features**

Modular construction for customer-specified length

10 Colors available for color-coding applications

Standoffs for improved flux removal

3/8" Centers (0.375"/9.50 mm)

UL Recognized – 20A at 300V



Wire-ready; raised screws for 12AWG to 22AWG wire

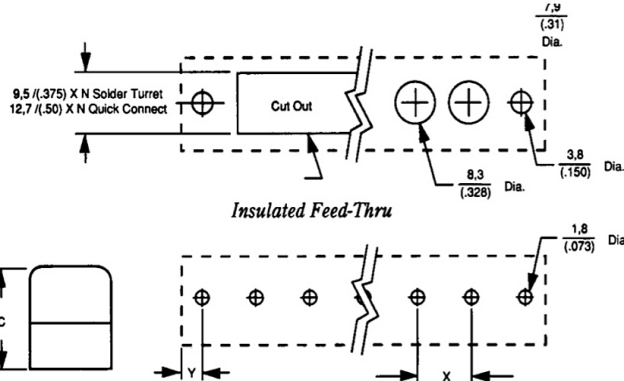
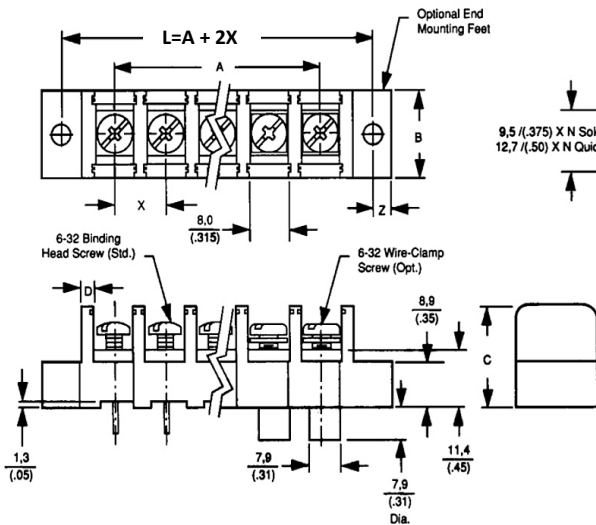


## JB6 Series

### Specifications

Housing Material: Thermoplastic polyamide, UL 94V-0, 130° max. operating temperature  
 Terminals: Brass, bright tin over copper plating  
 Screws: #6-32 steel, zinc plating with clear chromate coating undercut binding head  
 Rating: 20A, 300V  
 Wire Range: 12-22 AWG

### Printed Circuit Board Layout



SIZE	JB6
B	15.9 (0.63)
C	19.0 (0.75)
D	1.5 (0.06)
X	9.5 (0.375)
Y	5.5 (0.22)
Z	4.0 (0.16)

(N) - # of Positions	A (Inches)	A mm	(N) - # of Positions	A (Inches)	A mm
2	(0.375)	9.5	14	(4.875)	123.8
3	(0.750)	19.1	15	(5.250)	133.3
4	(1.125)	28.6	16	(5.625)	142.9
5	(1.500)	38.1	17	(6.000)	152.4
6	(1.875)	47.6	18	(6.375)	161.9
7	(2.250)	57.1	19	(6.750)	171.5
8	(2.625)	66.7	20	(7.125)	181.0
9	(3.000)	76.2	21	(7.500)	190.5
10	(3.375)	85.7	22	(7.875)	200.2
11	(3.750)	95.2	23	(8.250)	209.6
12	(4.145)	104.8	24	(8.625)	219.1
13	(4.500)	114.3			

### How to Order

**JB6 - X X XX - XX - X**

**Color**

1 - White	6 - Yellow
2 - Red	7 - Purple
3 - Blue	8 - Brown
4 - Green	9 - Gray
5 - Orange	0 - Black

**Number of Screw Positions**  
(Does not include mounting positions)

01 - 100 Module Bulk Pack  
 02 - 2 Positions  
 12 - 12 Positions  
 There is no limit to length

**Screw**

07 - Steel binding combo head  
 08 - Steel combo head wire clamp (SEMS)

**Block Style**

- Flat, all positions filled
- Flat, end mounting holes provided
- Insulating turret, end mounting holes provided
- Insulating turret, all positions filled

**Terminal Style**

P - Printed circuit pin  
 T - Solder turret  
 Q - Quick connect (250°)  
 S - Non-Feed thru

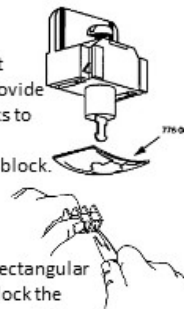
**Spacing - (Center to Center)**

6 - 3/8" centers - (0.375" or 9.50 mm)

### Accessories

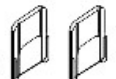
#### Retaining Clips:

Spring metal retaining clips fit around Insulating barrel to provide permanent mounting of blocks to panels without the need for mounting holes. Use two per block. Part No. 776-0007



#### End Barrier

JB6 Part No. 640-448-XX



#### Right End Mounting Hole

JB6 Part No. 640-447-XX



#### Left End Mounting Hole

JB6 Part No. 640-446-XX



#### Take Apart Tool:

Inserting tool into the larger rectangular holes spread the plastic to unlock the remaining barbs that hold the modules together. Part No. 721-0497