

# Brand New! Unique Product Development!

**Medium-Power Thru-Panel Terminal Block**

**Pitch: 27mm**

**600 Volts / 150 Amps**

**PART#:**  
**OTB-488**

**Type:**  
High-Power Thru-Panel

**Features:**  
Thru-Panel, Barrier Construction  
Plastic, Finger-Safe Cover  
Marker Strip Included

**Applications:**  
Suitable for:  
Electrical Switch Gear  
Motor Controls  
Motor/Gen Sets  
Electric Heating  
Spa Controls  
Custom Control Panels

**Electrical**

**Rated Voltage:**  
600V

**Rated Current:**  
150A

**Wire Size:**  
3-10 AWG

**Operating Temperature:**  
-40C to +90C

**Materials**

**Housing:**  
Polycarbonate (UL94V-0)  
Standard Color: Black

**Cover:**  
Polycarbonate (UL94V-0), Clear

**Terminal:**  
Brass, Nickel-Plated

**Positions Available:**  
2-15

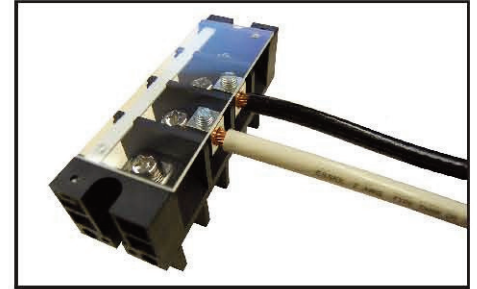
**Screw Size:**  
M6, Brass, Nickel-Plated

**Withstanding Voltage:**  
AC2500V

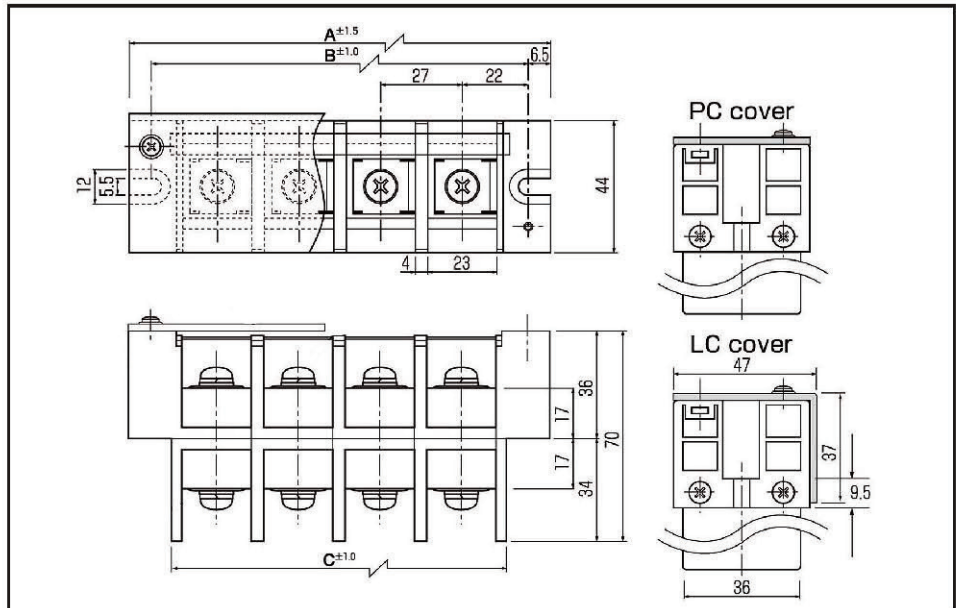
**Torque:**  
22 lbs. per inch



OTB-488 with marker strip installed

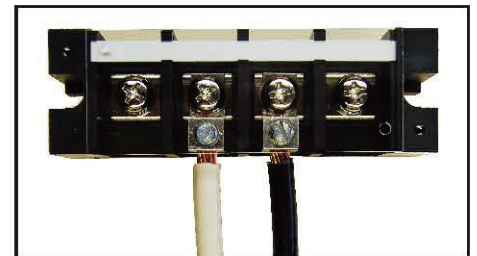


(Typical Application)

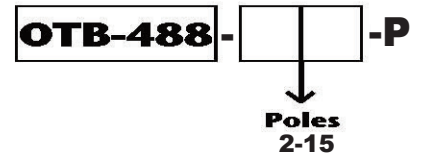


BlockMaster Electronics' new OTB-488 Series are medium-power, thru-panel terminal blocks available in 2-15 positions.

BlockMaster's OTB-488 series are perfect for interfacing internally wired products to the outside world. They offer a clear, protective cover to reduce shock hazard, and each terminal has a SEMS screw for convenient field wiring as shown. Suitable for industrial controls, spa controls or any medium-power field wiring to control box application.



**HOW TO ORDER:**



1400 Howard Street Phone: (847) 956-1680  
Elk Grove Village, IL 60007 Fax: (847) 956-1690

[www.BlockMaster.com](http://www.BlockMaster.com)

4/09/08