

# Brand New! Unique Product Development!

**High-Power Thru-Panel Terminal Block**

**Pitch: 21mm**

**600 Volts / 100 Amps**

**PART#:**  
**OTB-388**

**Type:**  
High-Power Thru-Panel

**Features:**  
Thru-Panel Barrier Construction  
Plastic, Finger-Safe Cover Included  
SEMS Screws

**Applications:**  
Suitable for:  
Electrical Switch Gear  
Motor Controls  
Motor/Gen Sets  
Electric Heating  
Spa Controls  
Off-Highway Vehicles

**Electrical**

**Rated Voltage:**  
600V

**Rated Current:**  
100A

**Wire Size:**  
2-8 AWG CU

**Operating Temperature:**  
-40C to +90C

**Materials**

**Housing:**  
Polycarbonate (UL94V-0)  
Standard Color: Black

**Cover:**  
Polycarbonate (UL94V-0), Clear

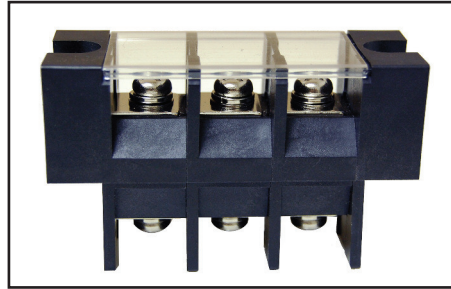
**Terminal:**  
Brass, Nickel-Plated

**Positions Available:**  
2-15

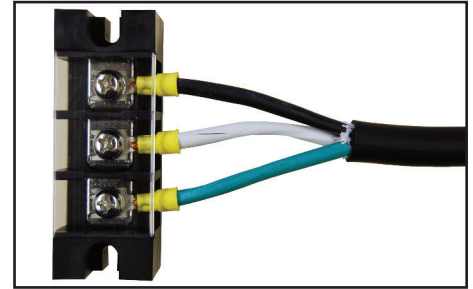
**Screw Size:**  
M6, Steel, Nickel-Plated

**Withstanding Voltage:**  
AC2500V

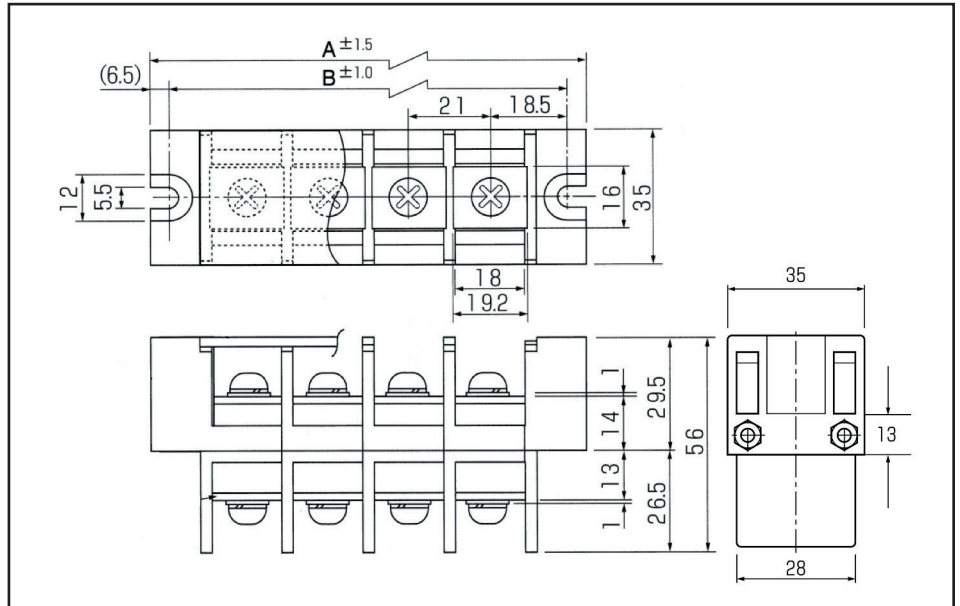
**Torque:**  
26 lbs. per inch



OTB-388 with clear cover installed

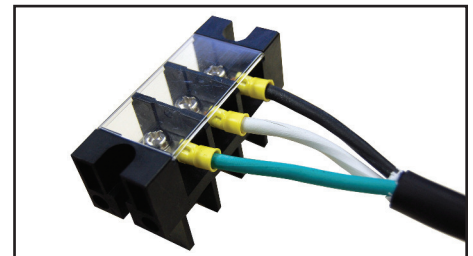


(Typical Application)

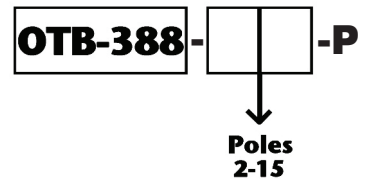


**BlockMaster Electronics' new OTB-388 Series are medium-power, thru-panel terminal blocks available in 2-15 positions.**

**BlockMaster's OTB-388 series are perfect for interfacing internally wired products to the outside world. They offer a clear, protective cover to reduce shock hazard, and each terminal has a SEMS screw for convenient field wiring as shown. Suitable for industrial controls, spa controls or any medium-power field wiring to control box application.**



**HOW TO ORDER:**



4/09/08

1400 Howard Street Phone: (847) 956-1680  
Elk Grove Village, IL 60007 Fax: (847) 956-1690

[www.BlockMaster.com](http://www.BlockMaster.com)