

**MEDIUM POWER LINE INPUT DISTRIBUTION BLOCKS, 2 & 3 POLES**  
**300 VOLTS/50 AMPS**

**SERIES NUMBERS**

- HP-AT101-1
- HP-AT101-4
- HP-AT101-5
- HP-AT101-6

**Type:**


Input Power Line Distribution  
1Ø 110/220 V (2 Poles)  
Single Ø & 3 Ø Models (3 Poles)

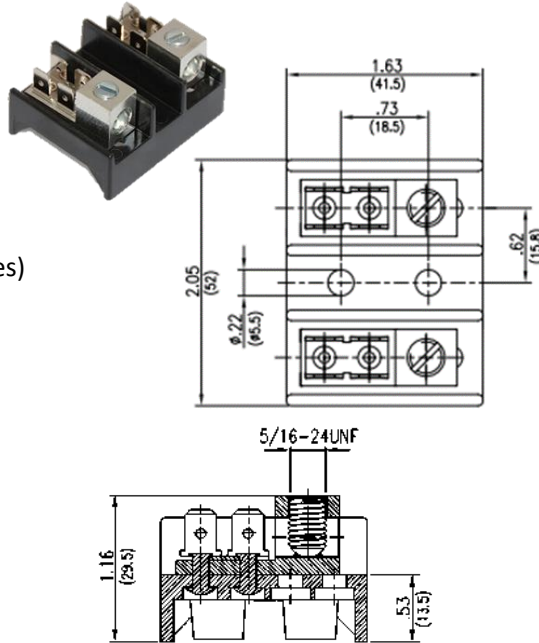
**Features:**


Low Cost Effective  
Input Power Distribution

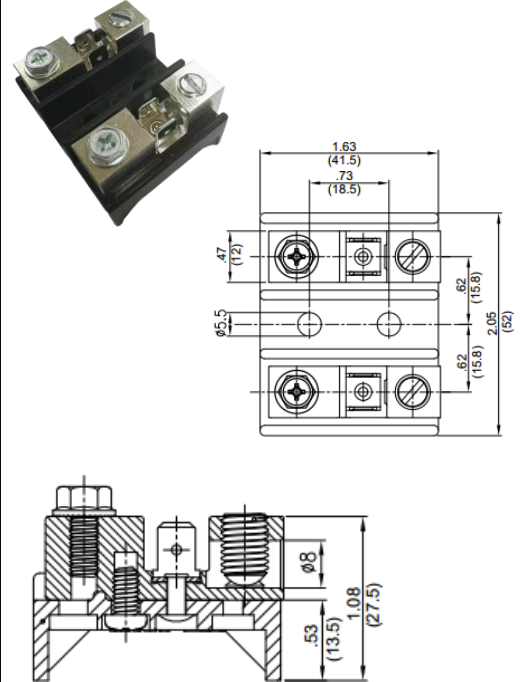
**Applications:**

- Suitable for:
- Ice Makers
- Water Heaters
- Panel Heaters
- Wall Heaters
- Baseboard Heaters
- HVAC
- Elevator Equipment

**ORDER: HP-AT101-1-02P** 



**ORDER: HP-AT101-4-02P** 



**Electrical**

**Rated Voltage:**  
300V  
**Rated Current:**  
Line/Load 50A  
**Wire Size:** See Page 2

**Operating Temperature:**  
-25°C to +90°C

**Materials**

**Housing:**  
Phenolic  
**Terminals:**  
Aluminum  
Brass / Nickel Plated

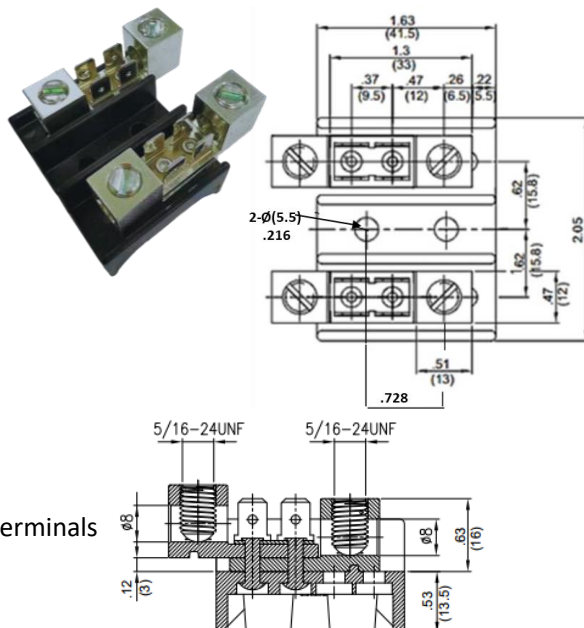
**Termination:** See Page 2


Load Side: .250 Q.C. Tab Terminals

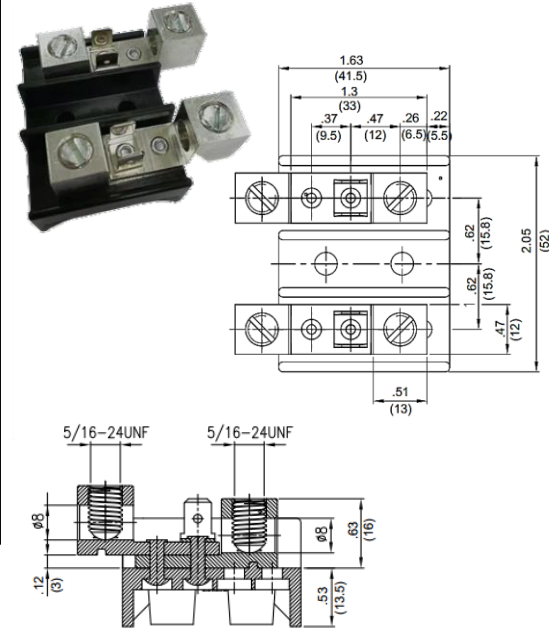
**Withstand Voltage:**

AC 2,500 V

**ORDER: HP-AT101-5-02P** 



**ORDER: HP-AT101-6-02P** 



## TERMINATION & WIRE SIZE

PART NO.	INPUT FIELD WIRING	INPUT WIRING	LOAD TERMINALS	LOAD WIRING
HP-AT101-1	5/16 - 24 Screw Clamp	2-3 AWG 50 LB-IN 4-6 AWG 45 LB-IN 8 AWG 40 LB-IN 10-14 AWG 35 LB-IN	4 .250" Tab Terminals / Pole	.250" Tab
HP-AT101-4	5/16 - 24 Screw Clamp	2-3 AWG 50 LB-IN 4-6 AWG 45 LB-IN 8 AWG 40 LB-IN 10-14 AWG 35 LB-IN	10 - 32 Screw for Ring/Spade Terminal 2 .250" Tab Terminals / Pole	.250" Tab 10 - 32 AWG 20 LBS. - IN
HP-AT101-5	5/16 - 24 Screw Clamp	2- 3 AWG 50 LB-IN 4- 6 AWG 45 LB-IN 8 AWG 40 LB-IN 10-14 AWG 35 LB-IN	5/16 - 24 Screw Clamp 4 .250" Tab Terminals / Pole	.250" Tab 2-3 AWG 50 LB-IN 4-6 AWG 45 LB-IN 8 AWG 40 LB-IN 10-14 AWG 35 LB-IN
HP-AT101-6	5/16 - 24 Screw Clamp	2-3 AWG 50 LB-IN 4-6 AWG 45 LB-IN 8 AWG 40 LB-IN 10-14 AWG 35 LB-IN	5/16 - 24 Screw Clamp 2 .250" Tab Terminals / Pole	.250" Tab 2-3 AWG 50 LB-IN 4-6 AWG 45 LB-IN 8 AWG 40 LB-IN 10-14 AWG 35 LB-IN

### PART NUMBER

### **HP-AT101-1-03P**

**Type:**

Input Power Line Distribution  
Single & 3 phase model 110/220V

**Features:**

Low Cost Effective  
Input Power Distribution

**Applications:**

Ice Makers  
Water Heaters  
Panel Heaters  
Wall Heaters  
Baseboard Heaters  
HVAC  
Elevator Equipment

**Materials**

**Housing:**  
Phenolic  
**Terminals:**  
Aluminum  
Brass / Nickel Plated

**Termination:**

Line Side: 8 AWG 40 LB/IN  
10-14 AWG 35 LB/IN  
2-3 AWG 50LB/IN  
4-6 AWG 45 LB/IN

Load Side: .250 Q.C. Tab Terminals

**Withstand Voltage:**

AC 2,500 V

**ORDER: HP-AT101-1-03P**



**Electrical**

**Rated Voltage:**

300V

**Rated Current:**

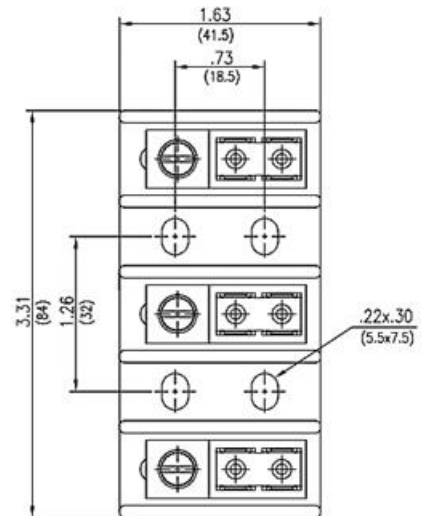
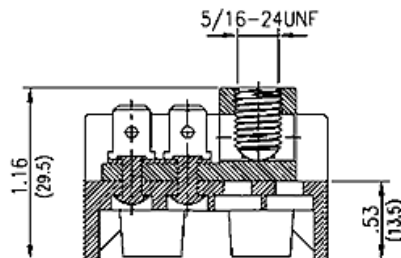
Line/Load 50A

**Wire Size:**

Line 2-14 AWG  
Load .250 Q.C. Tab Terminals

**Operating Temperature:**

-25°C to + 90°C



1400 Howard Street  
Elk Grove Village, IL 60007  
Phone: (800) 595-8881

[www.BLOCKMASTER.COM](http://www.BLOCKMASTER.COM)