

HIGH POWER PANEL DISTRIBUTION SERIES

PANEL DISTRIBUTION POWER BLOCK

600 VOLTS/115 AMPS

SERIES

HP-ATA - 115 - □ - □ P

Type:

Panel Distribution

Features:

1-3 Poles

Clear Plastic Safety Cover (Optional)

Applications:

Suitable for:

Panels

HVAC Equipment

Standby Generators

Switch Gear

Lighting Panels

Electrical

Rated Voltage:

600V

Rated Current:

115A

Screw Size / Torque

Line AL 7/16 - 20 UNF 3/16 Hex

2/0~6 AWG 94 LB/IN

8 AWG 40 LB/IN

10~14 AWG 35 LB/IN

M5 Stud 41 LB/IN

Load SS ¼ - 20 UNC Stud 50LB/IN

M5 Stud 41 LB/IN

10~ 18 AWG 7 LB/IN

2/0~6 AWG 94 LB/IN

8 AWG 40 LB/IN

10~14 AWG 35 LB/IN

Operating Temperature:

-25°C to +125°C

Materials

Housing:

Phenolic 94V-0

Cover:

Polycarbonate (UL94V-2)

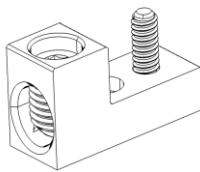
Terminals:

Aluminum

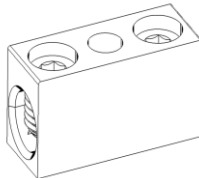
Withstanding Voltage:

AC 2,500 V

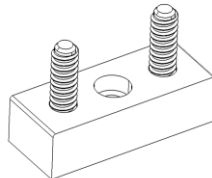
Note: Hex Nuts & Washers Included



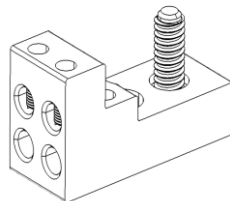
HP-ATA-115-1



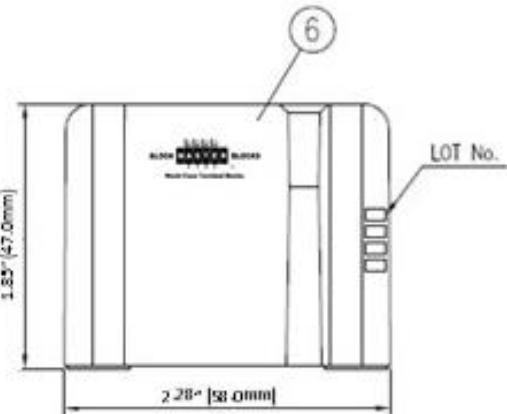
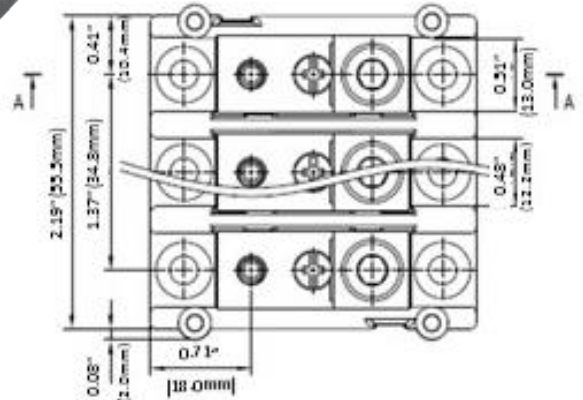
HP-ATA-115-2



HP-ATA-115-3



HP-ATA-115-4



HOW TO ORDER:

HP-ATA - 115 - □ - □ P - □ CL1

↓ ↓ ↓

Style 1-3 Poles Clear Cover (Optional)



1400 Howard Street Phone: (847) 956-1680
Elk Grove Village, IL 60007 Fax: (847) 956-1690

www.BlockMaster.com